

Biomarker Discovery for Meta-Classification and Prognosis of Melanoma using Transfer Learning

1 Supplementary Materials

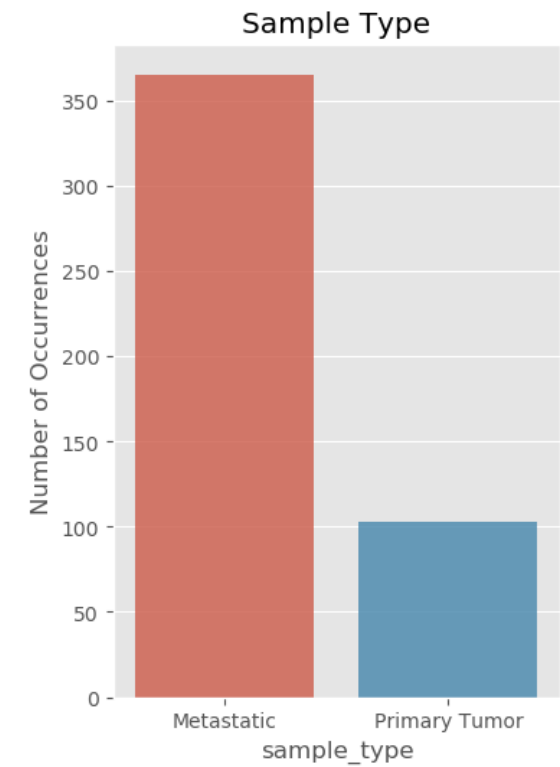


Figure S 1. Distribution of Sample Type

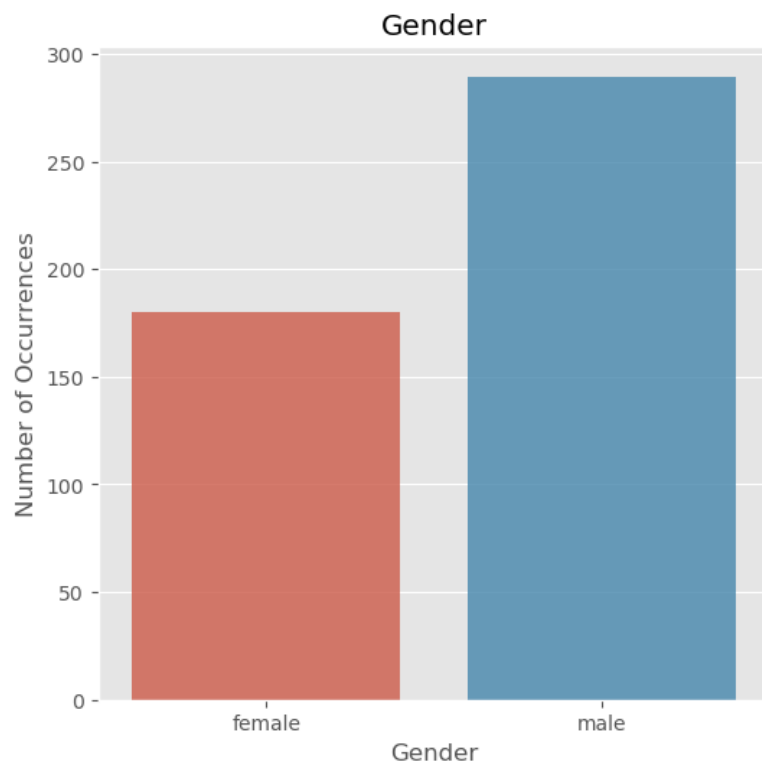


Figure S 2. Distribution of Gender

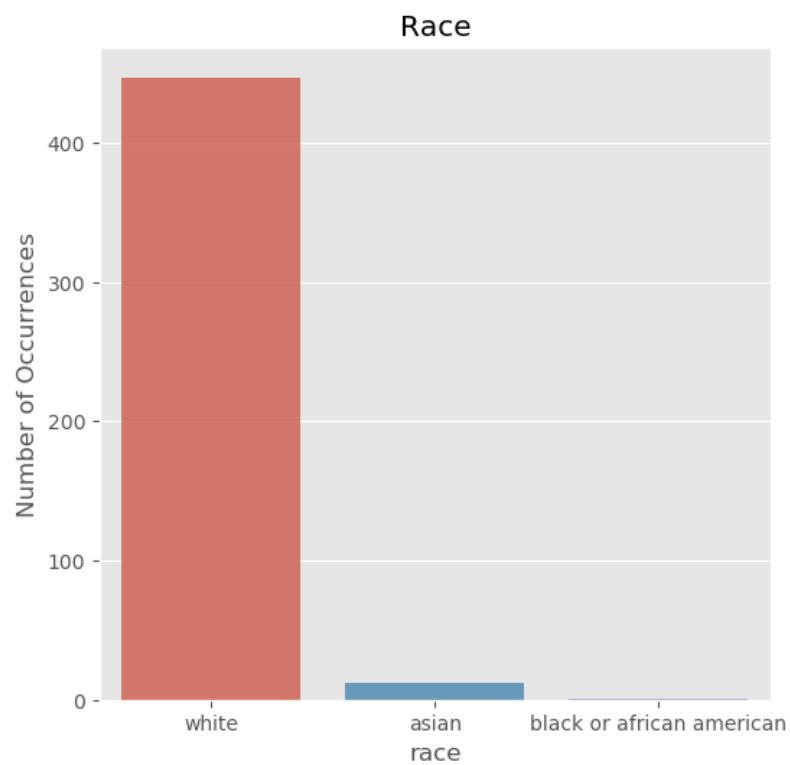


Figure S 3. Distribution of Race

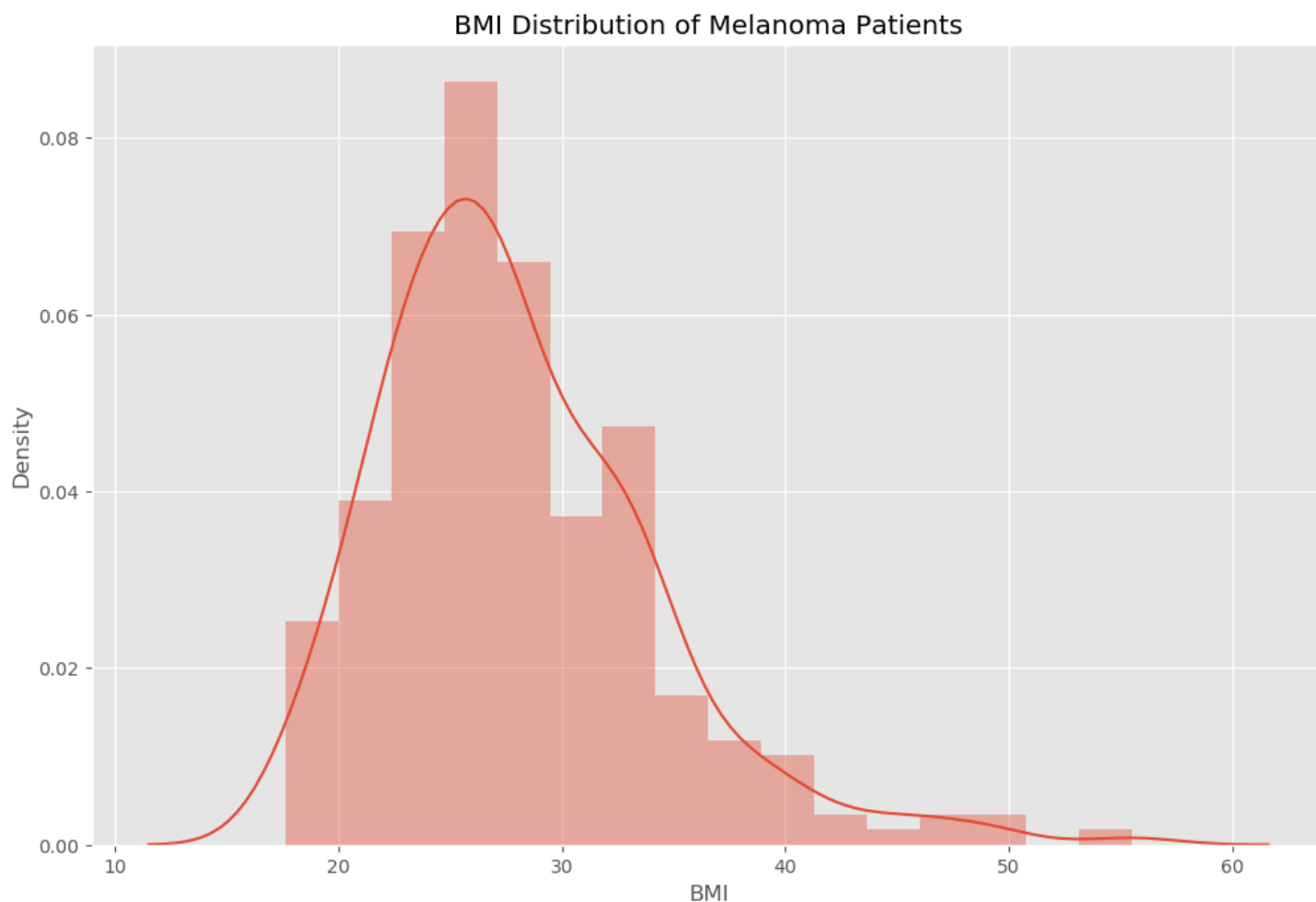


Figure S 4. Distribution of BMI

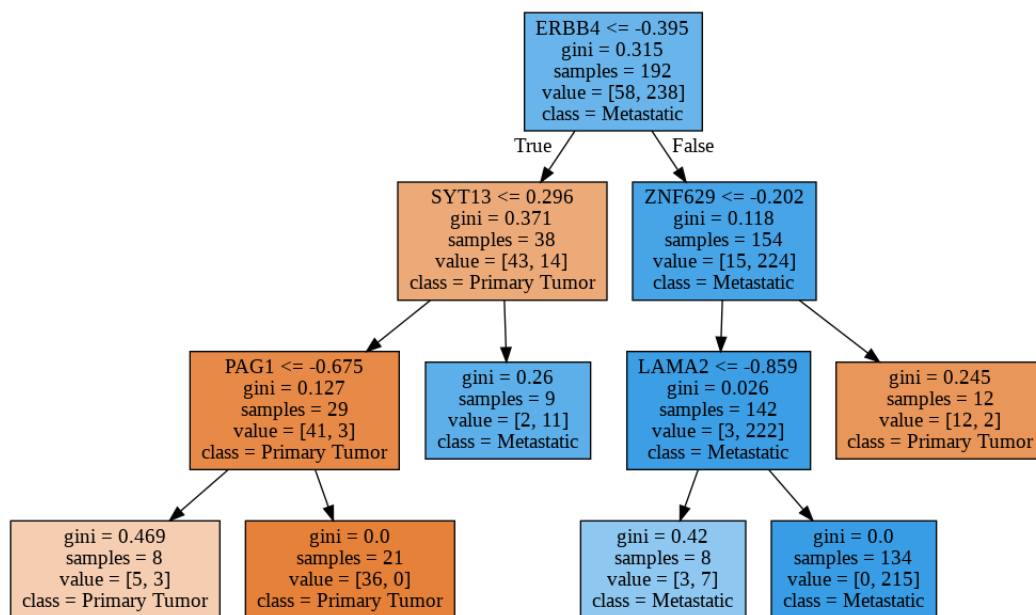


Figure S 5. Biomarker Discovery - Random Forest Estimator 1

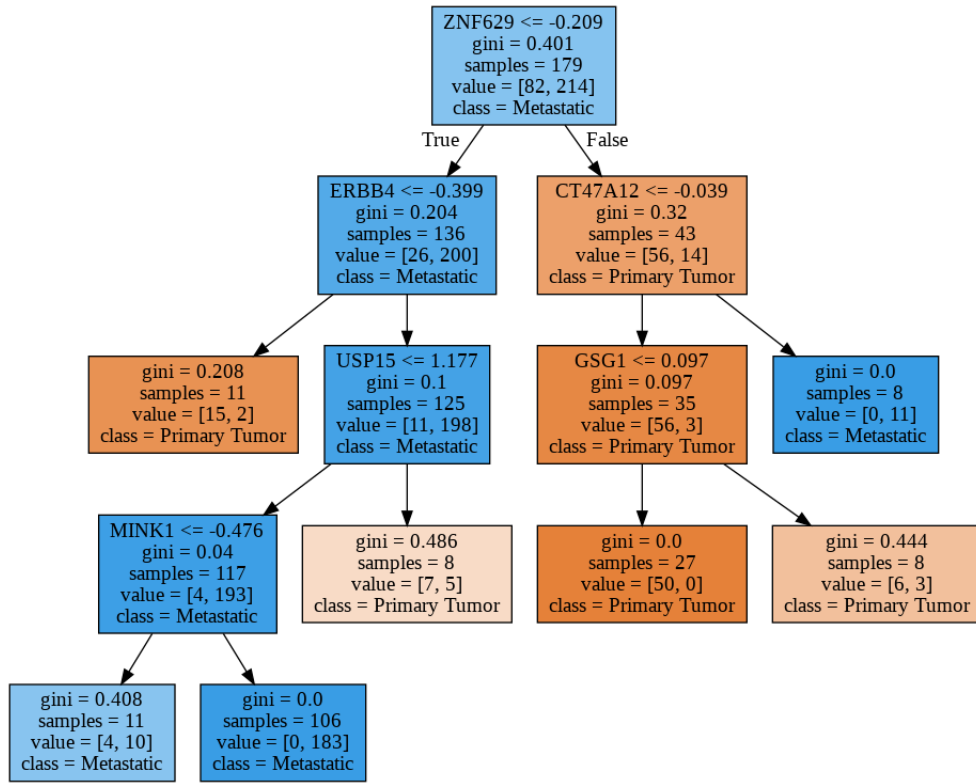


Figure S 6. Biomarker Discovery - Random Forest Estimator 2

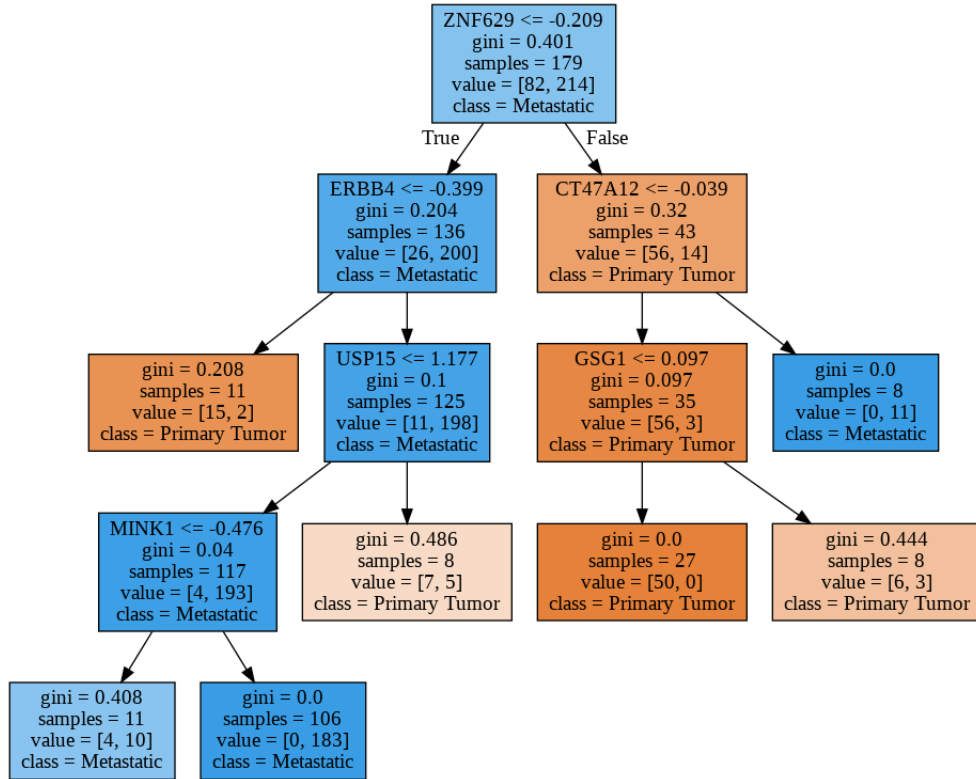


Figure S 7. Biomarker Discovery - Random Forest Estimator 3

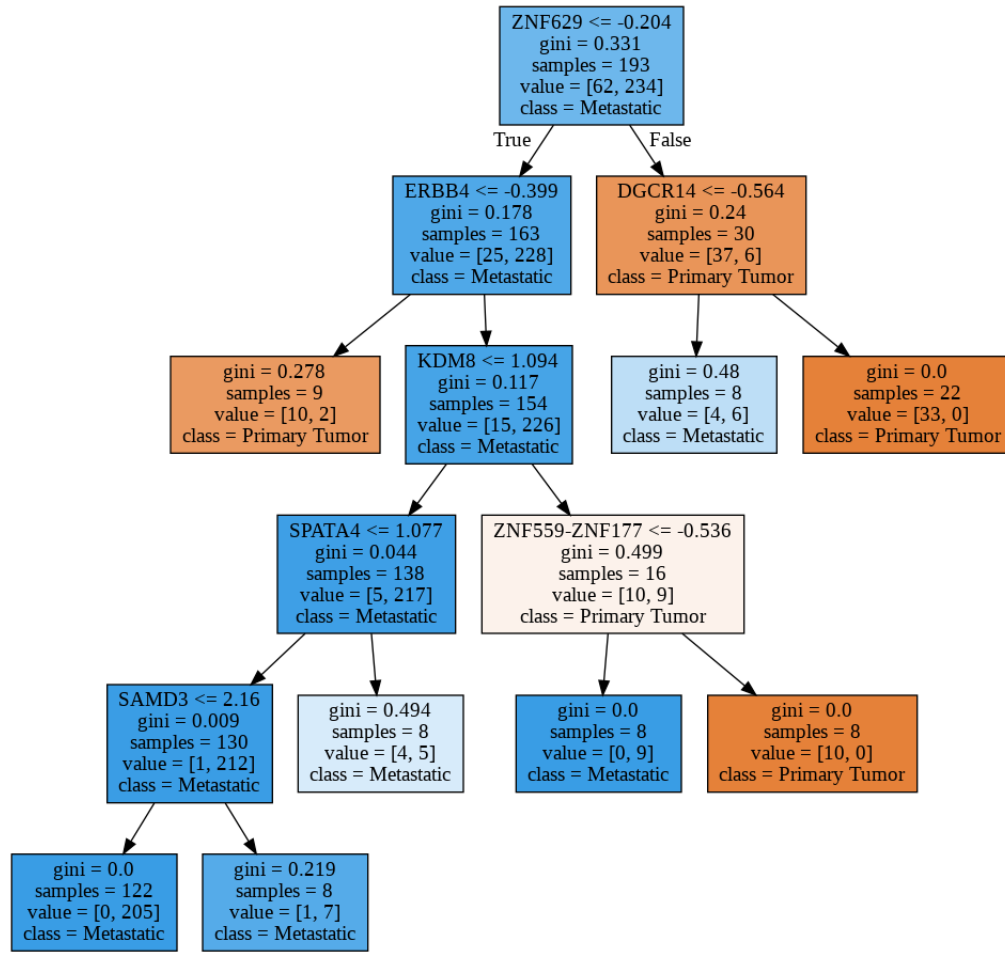


Figure S 8. Biomarker Discovery - Random Forest Estimator 4

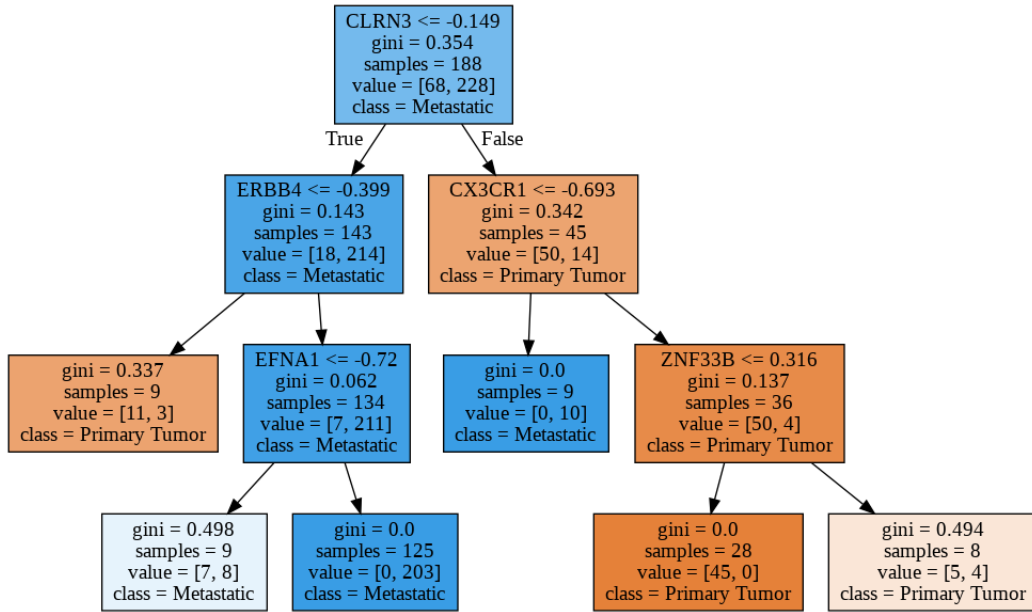


Figure S 9. Biomarker Discovery - Random Forest Estimator 5

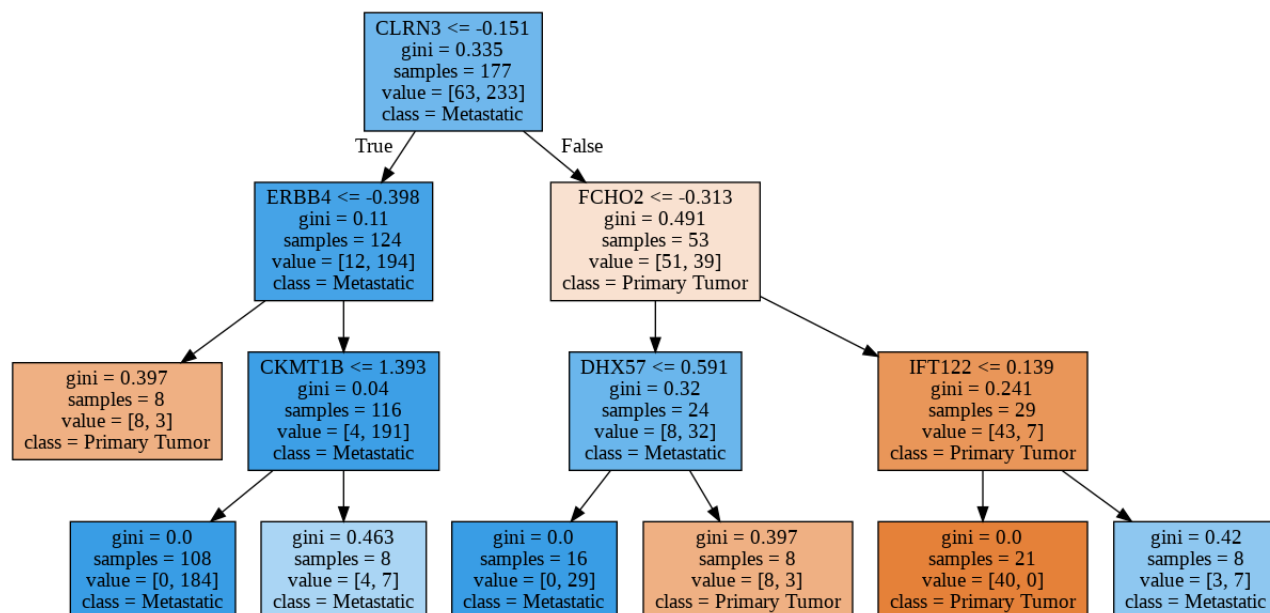


Figure S 10. Biomarker Discovery - Random Forest Estimator 6

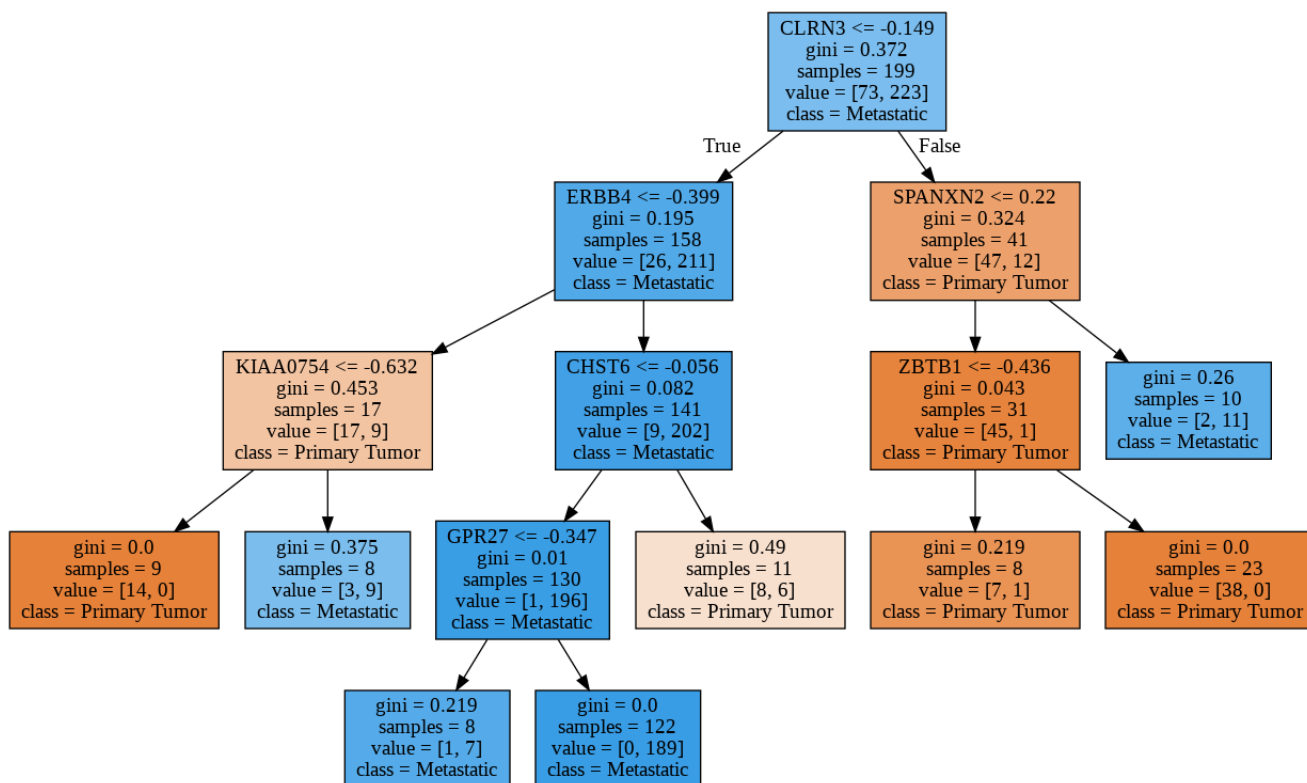


Figure S 11. Biomarker Discovery - Random Forest Estimator 7

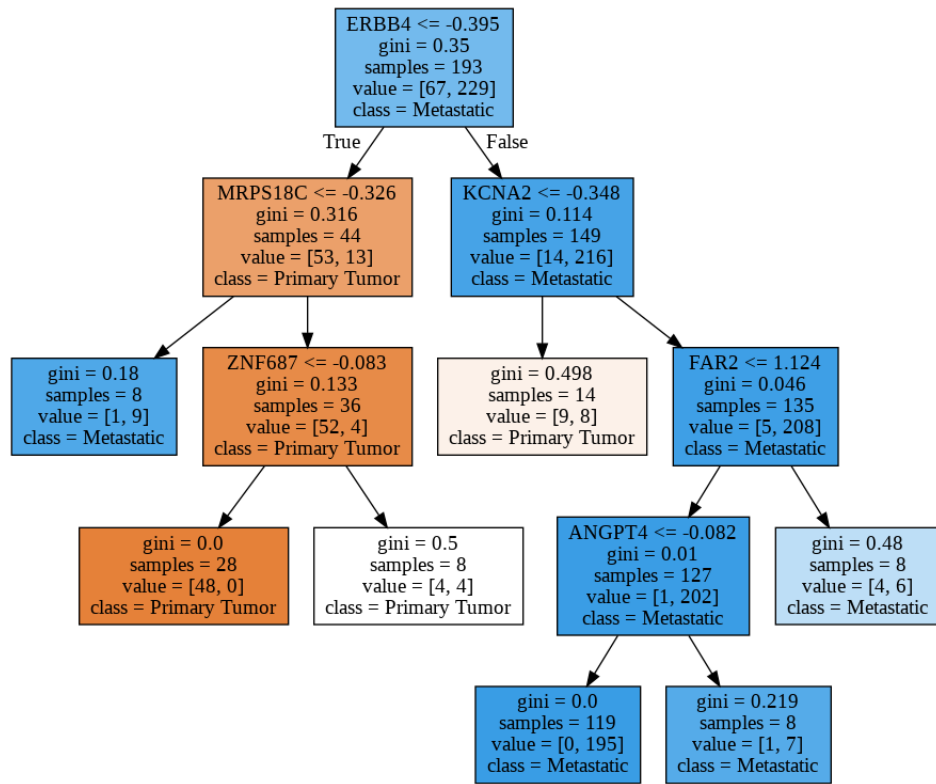


Figure S 12. Biomarker Discovery - Random Forest Estimator 8

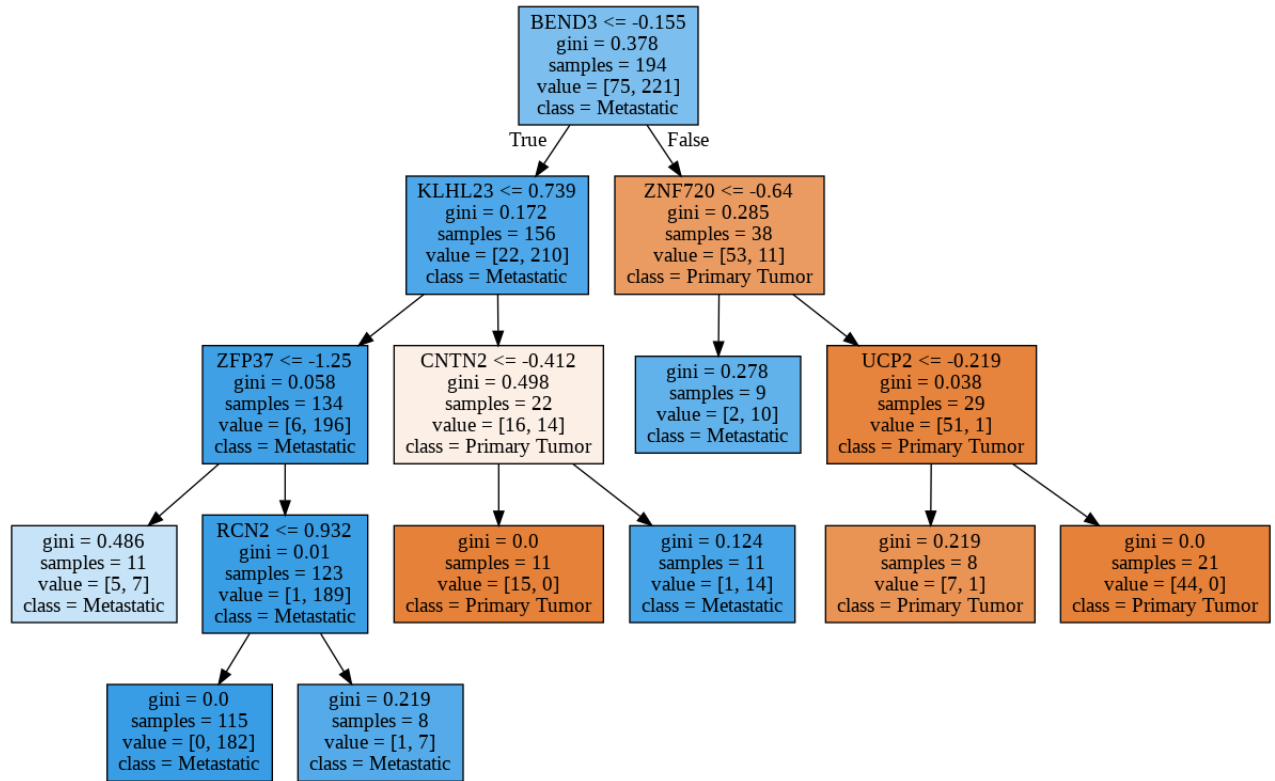


Figure S 13. Biomarker Discovery - Random Forest Estimator 9

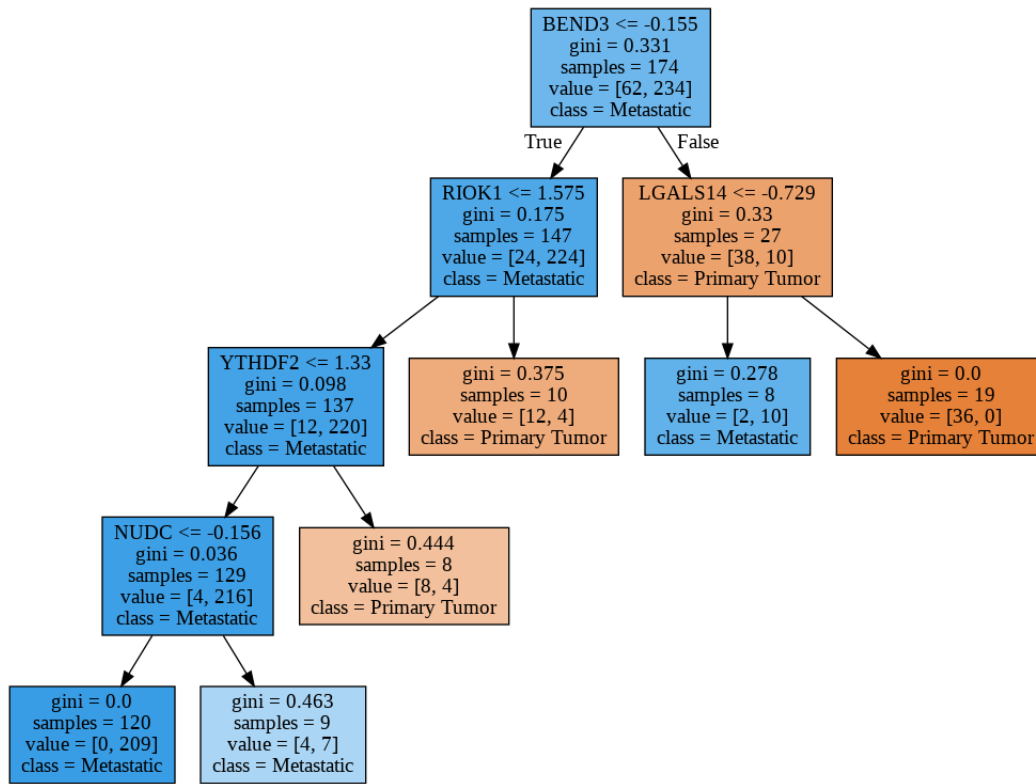


Figure S 14. Biomarker Discovery - Random Forest Estimator 10

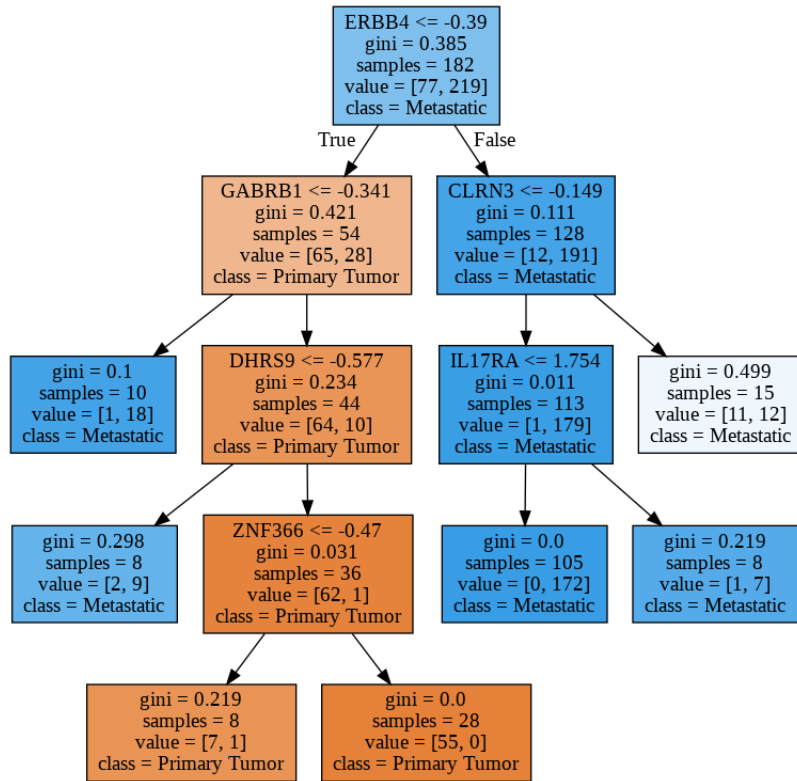


Figure S 15. Biomarker Discovery - Random Forest Estimator 11

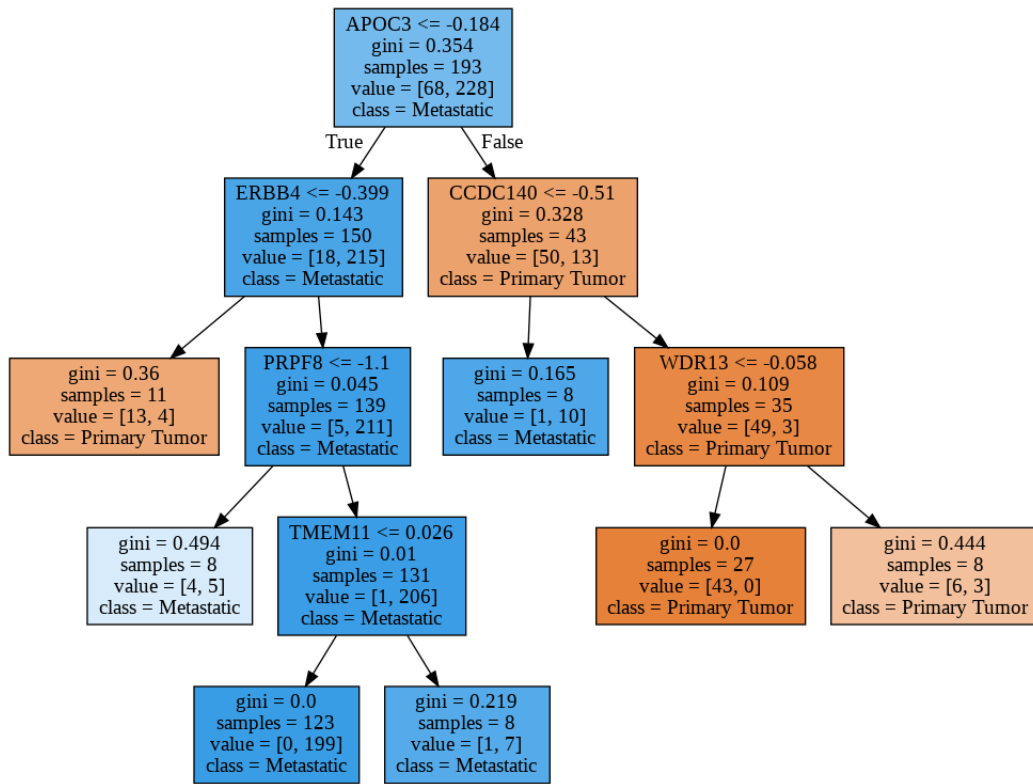


Figure S 16. Biomarker Discovery - Random Forest Estimator 12

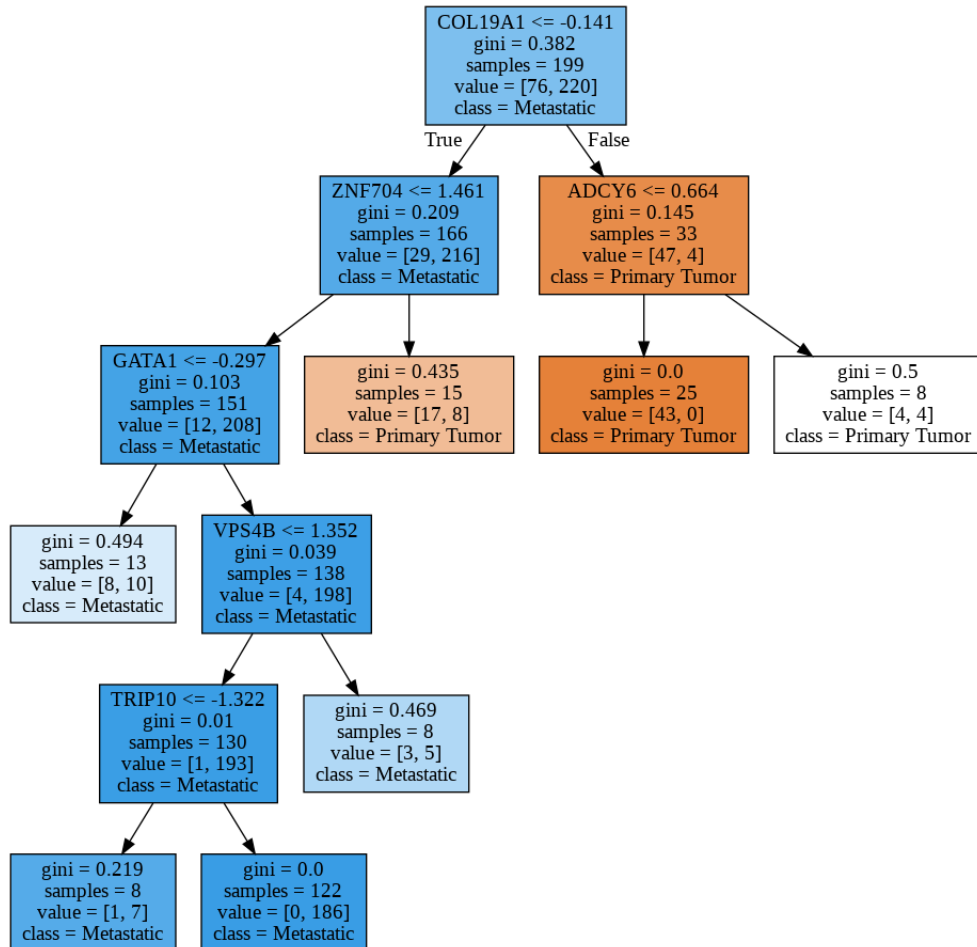


Figure S 17. Biomarker Discovery - Random Forest Estimator 13

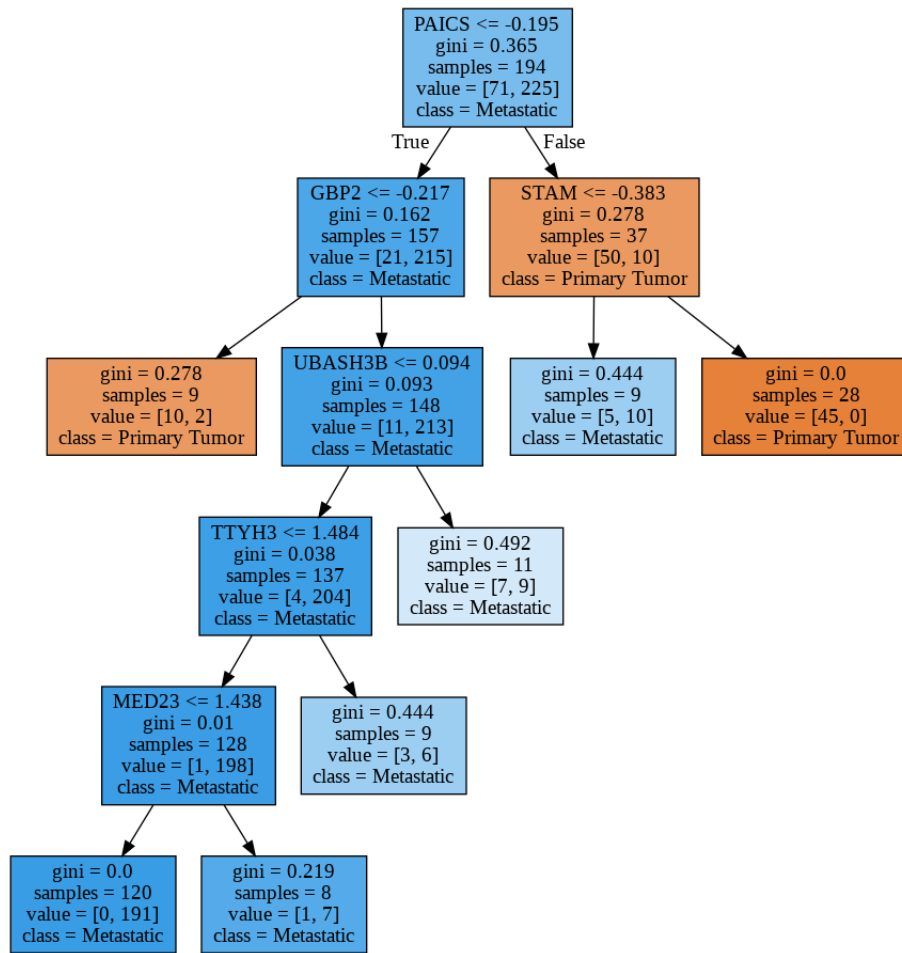


Figure S 18. Biomarker Discovery - Random Forest Estimator 14

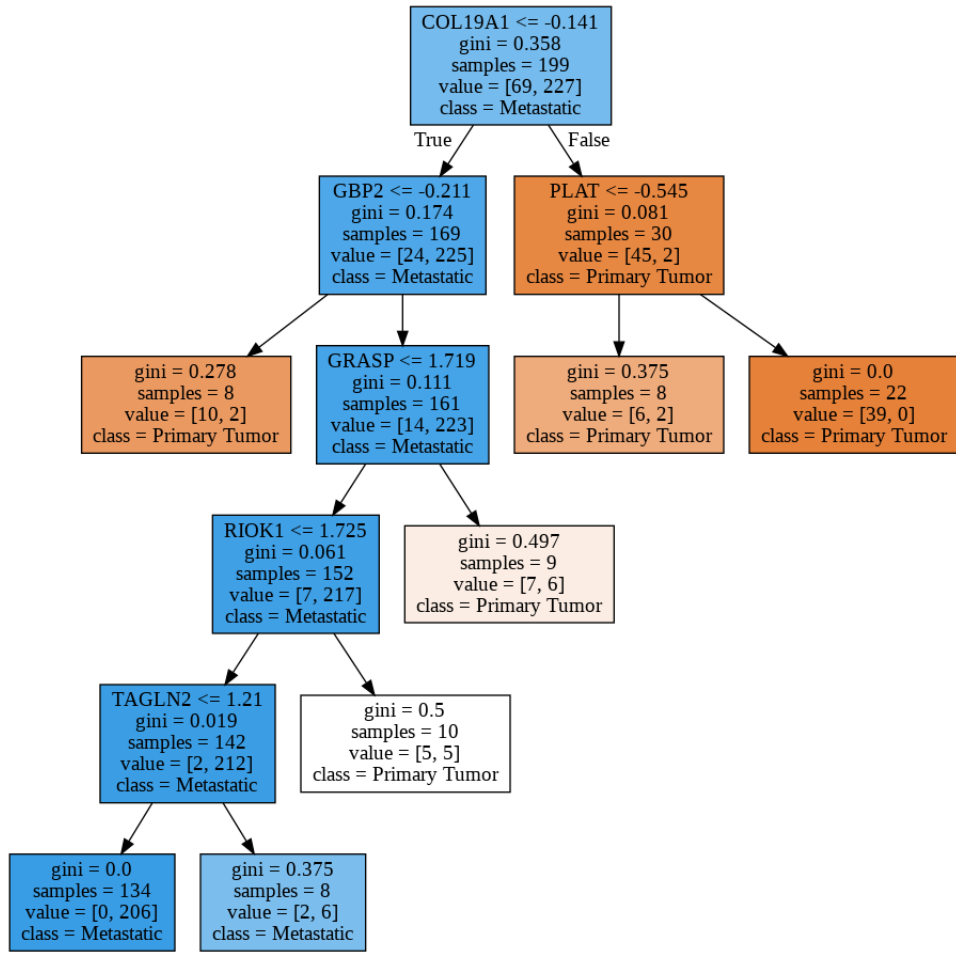


Figure S 19. Biomarker Discovery - Random Forest Estimator 15

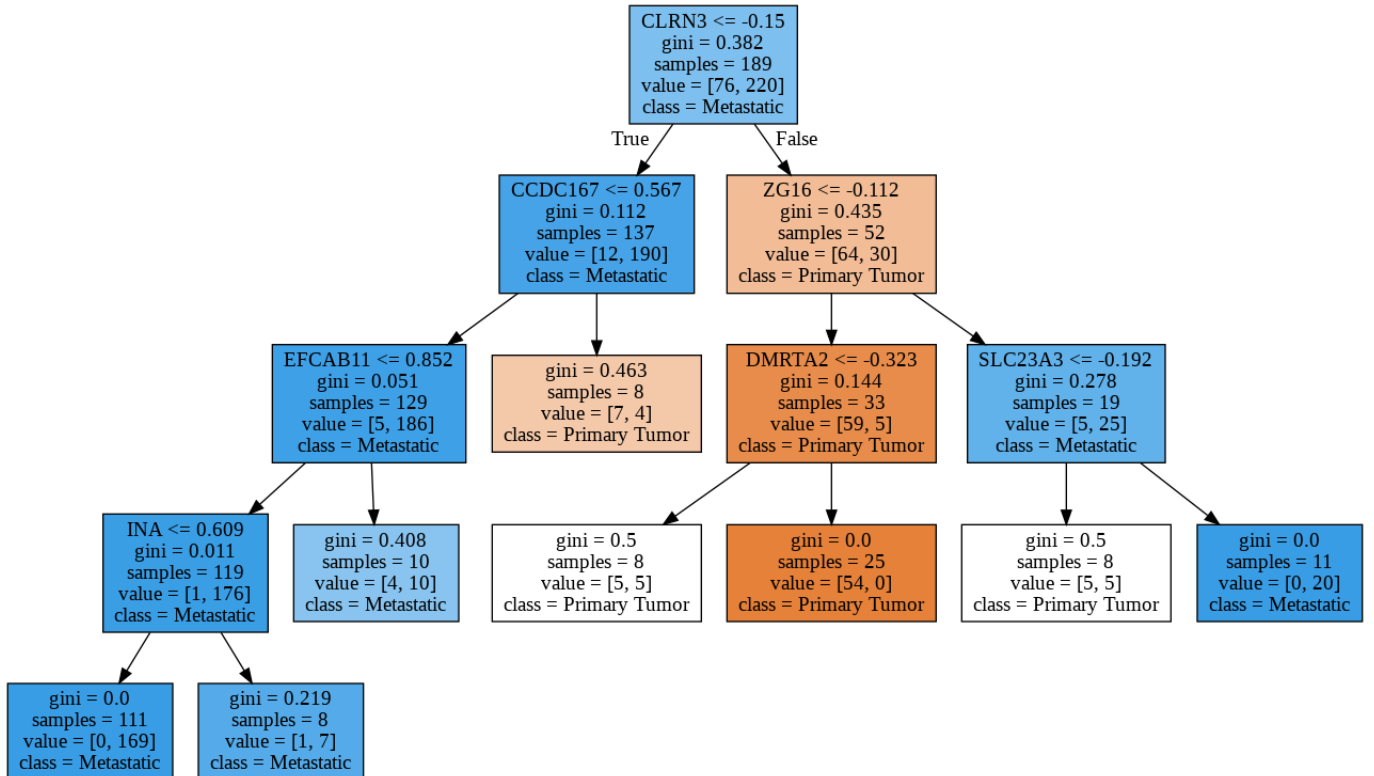


Figure S 20. Biomarker Discovery - Random Forest Estimator 16

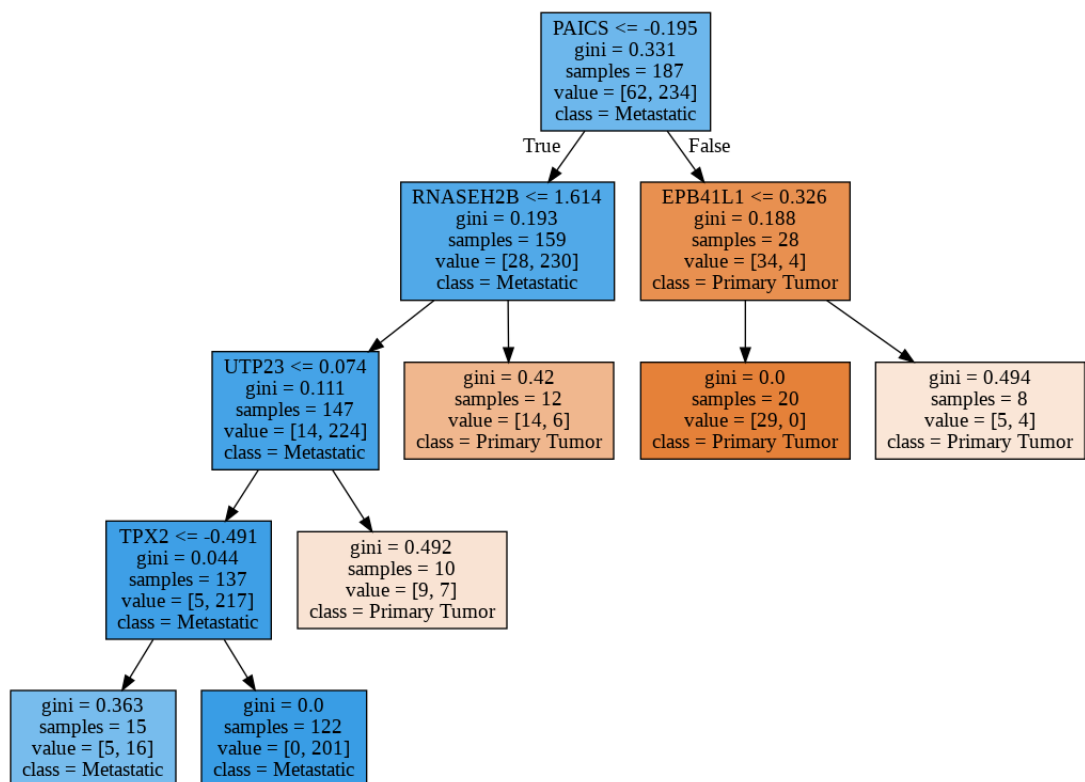


Figure S 21. Biomarker Discovery - Random Forest Estimator 17

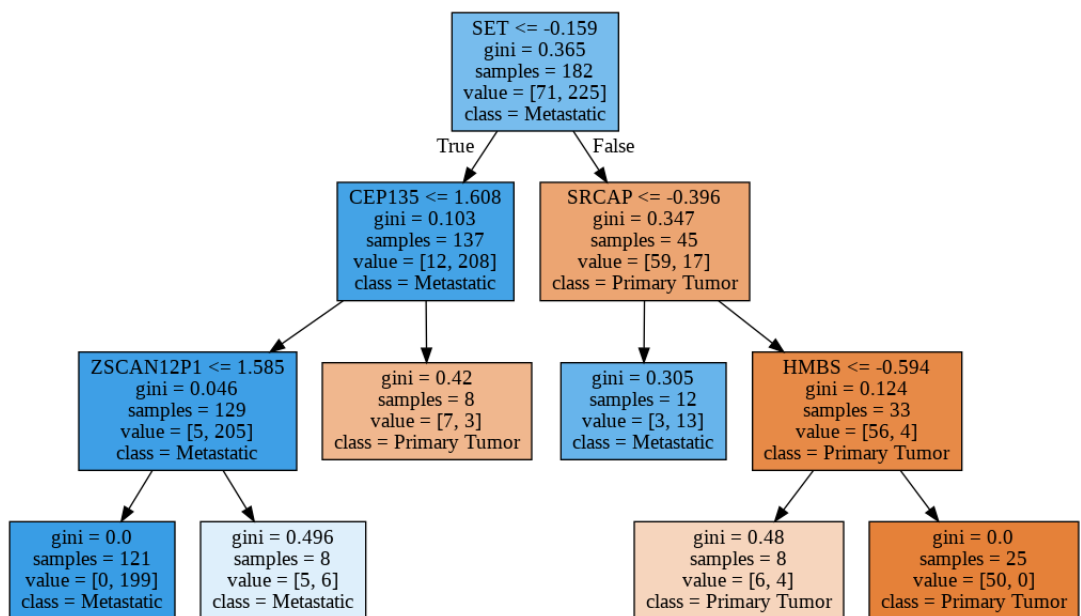


Figure S 22. Biomarker Discovery - Random Forest Estimator 18

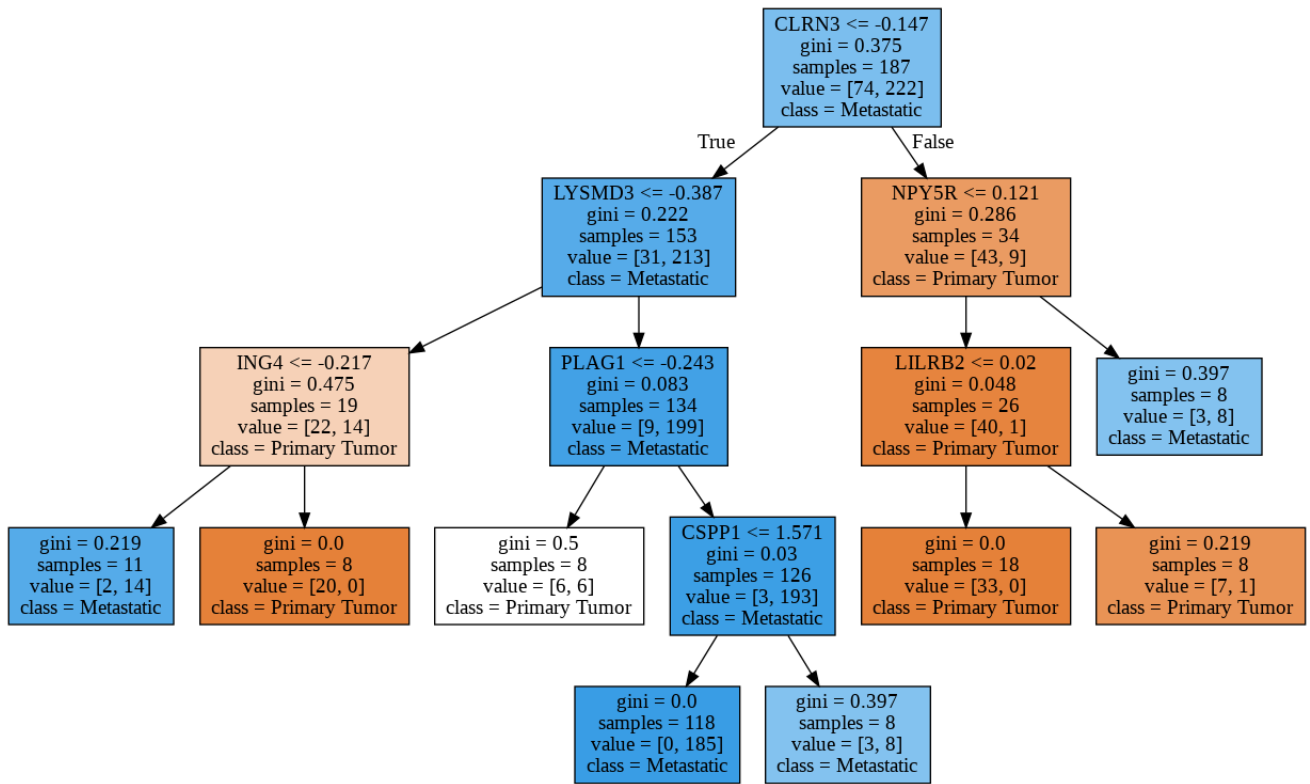


Figure S 23. Biomarker Discovery - Random Forest Estimator 19

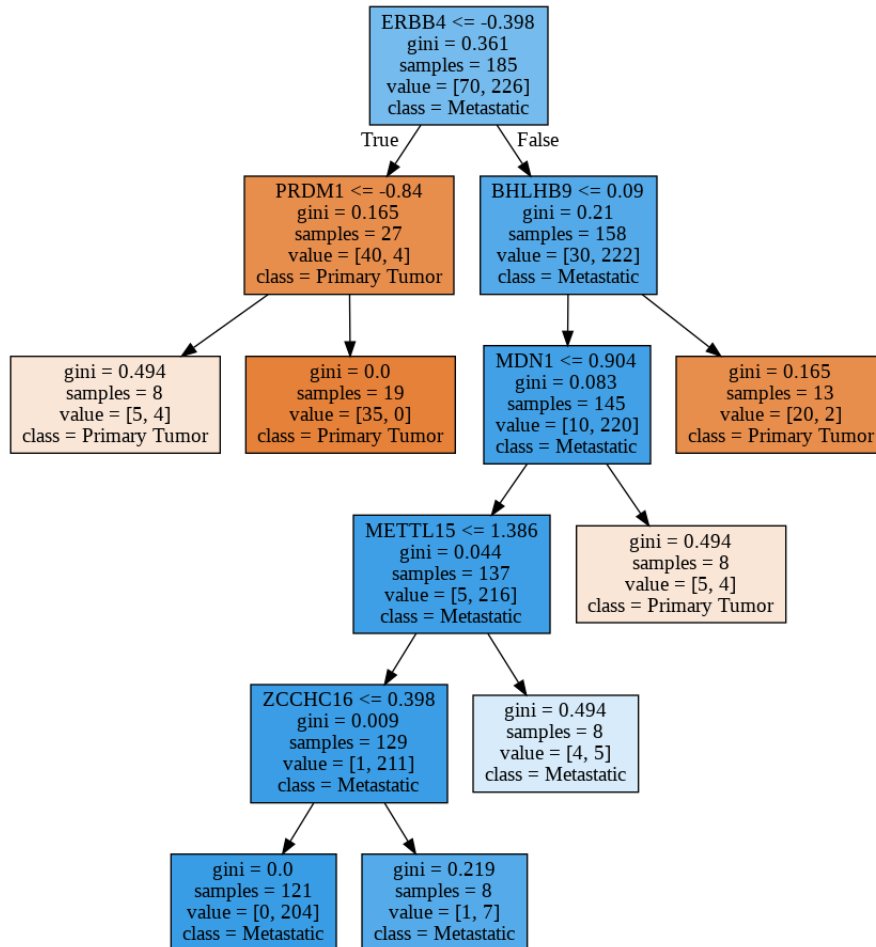


Figure S 24. Biomarker Discovery - Random Forest Estimator 20

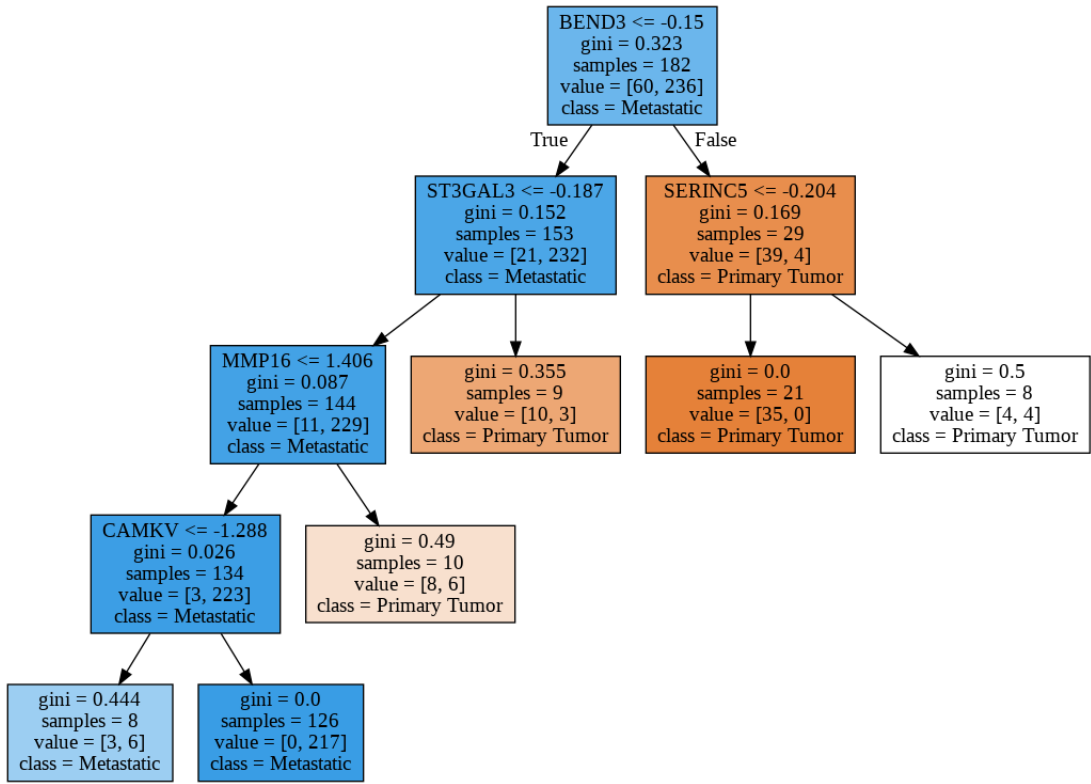


Figure S 25. Biomarker Discovery - Random Forest Estimator 21

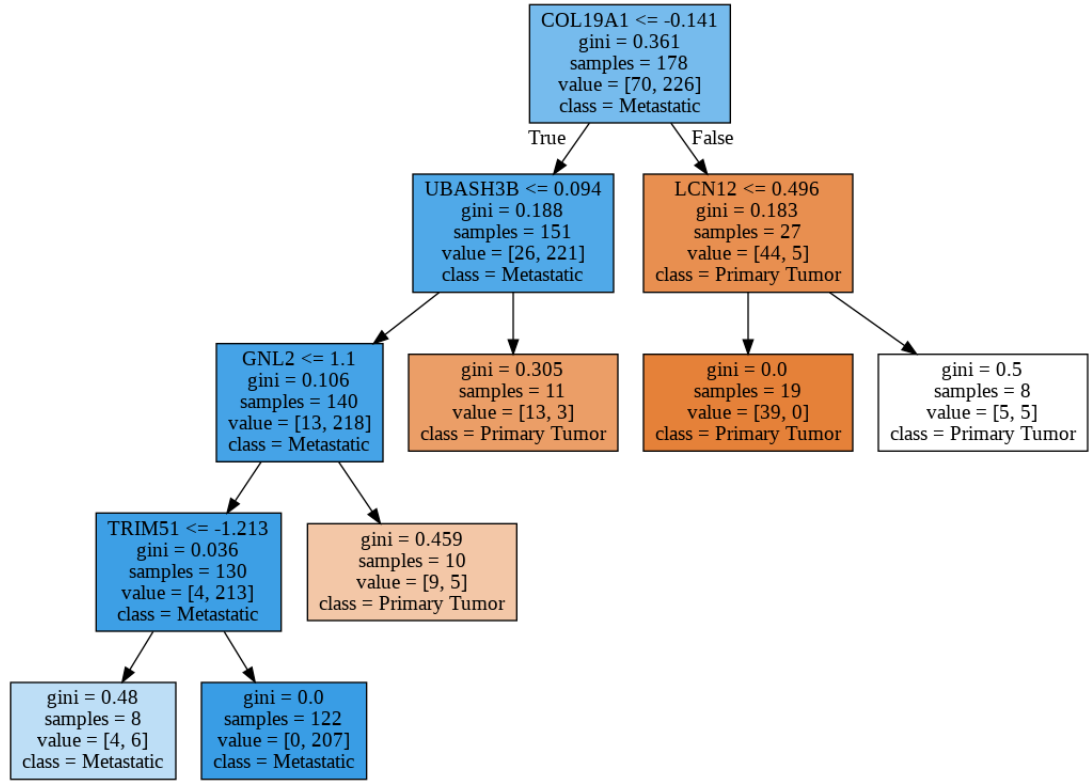


Figure S 26. Biomarker Discovery - Random Forest Estimator 22

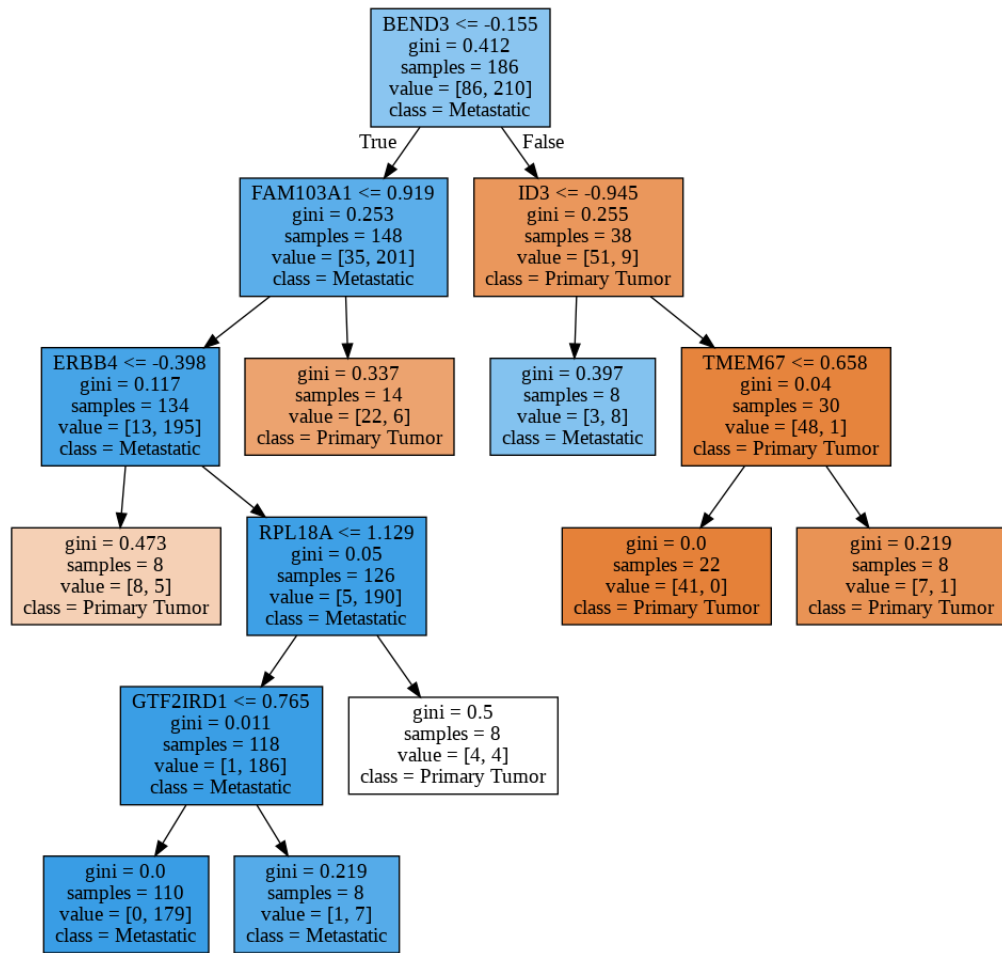


Figure S 27. Biomarker Discovery - Random Forest Estimator 23

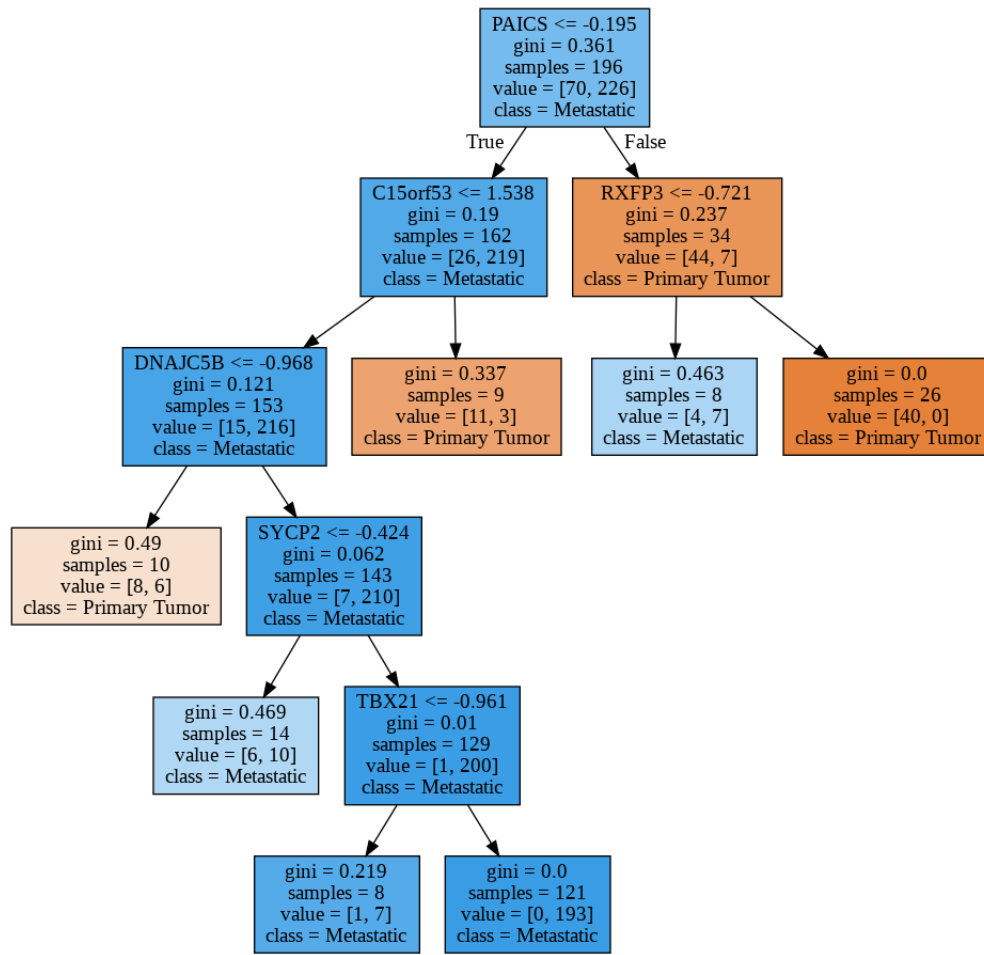


Figure S 28. Biomarker Discovery - Random Forest Estimator 24

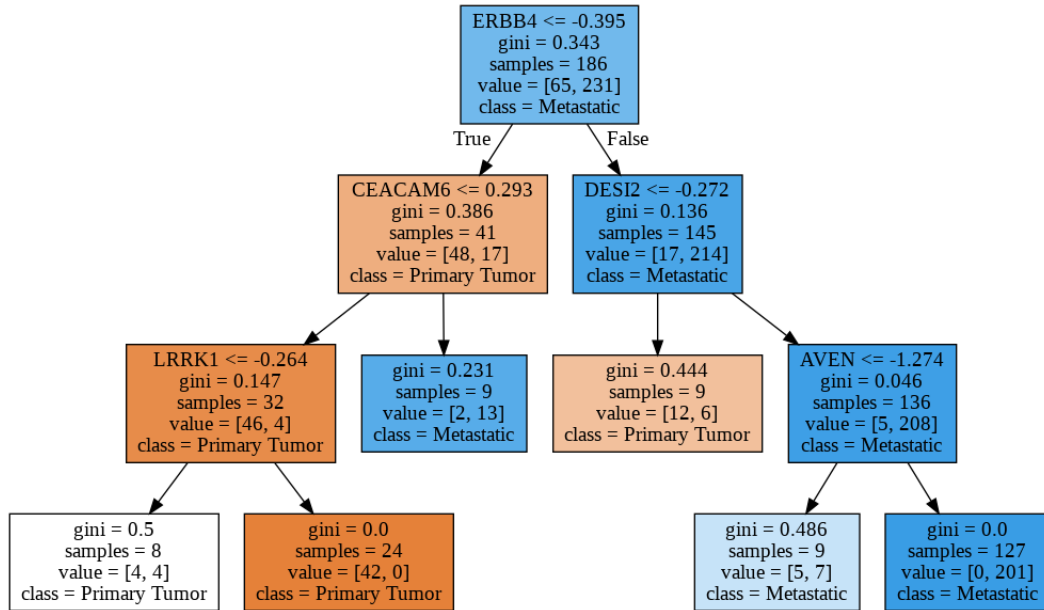


Figure S 29. Biomarker Discovery - Random Forest Estimator 25

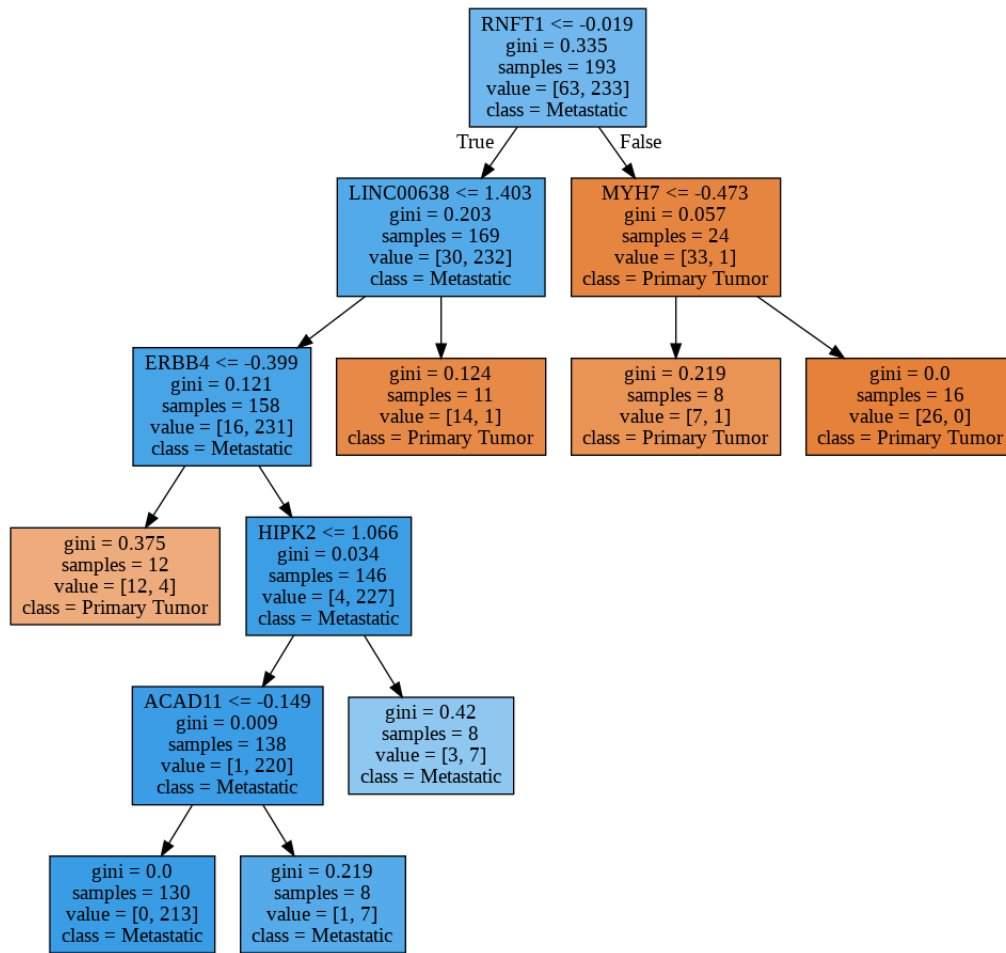


Figure S 30. Biomarker Discovery - Random Forest Estimator 26

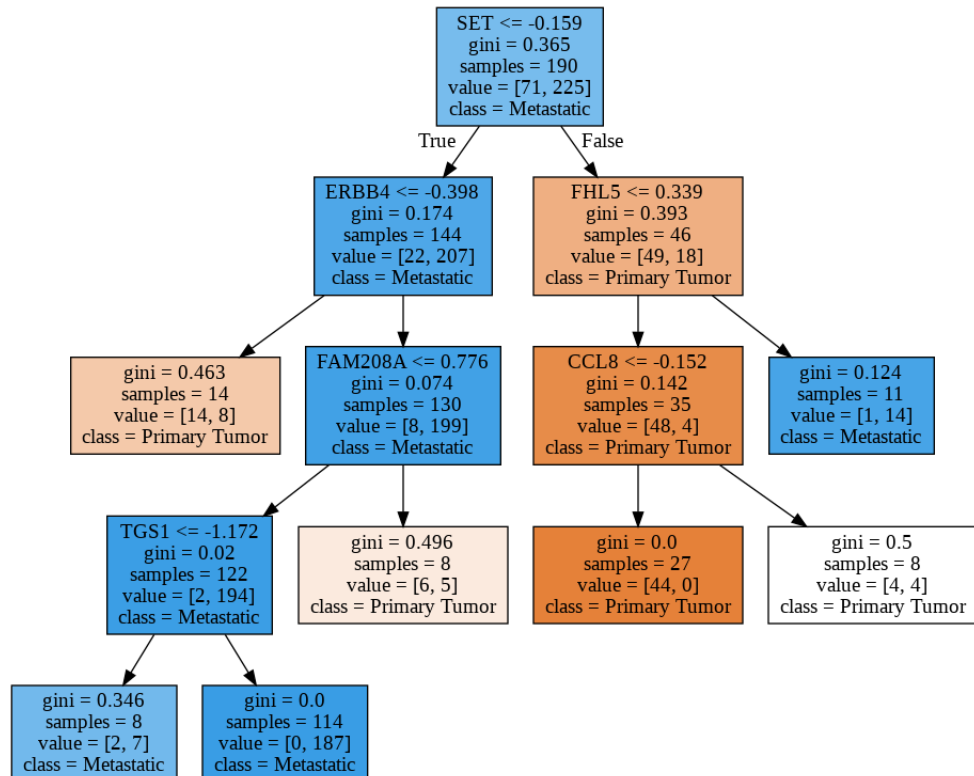


Figure S 31. Biomarker Discovery - Random Forest Estimator 27

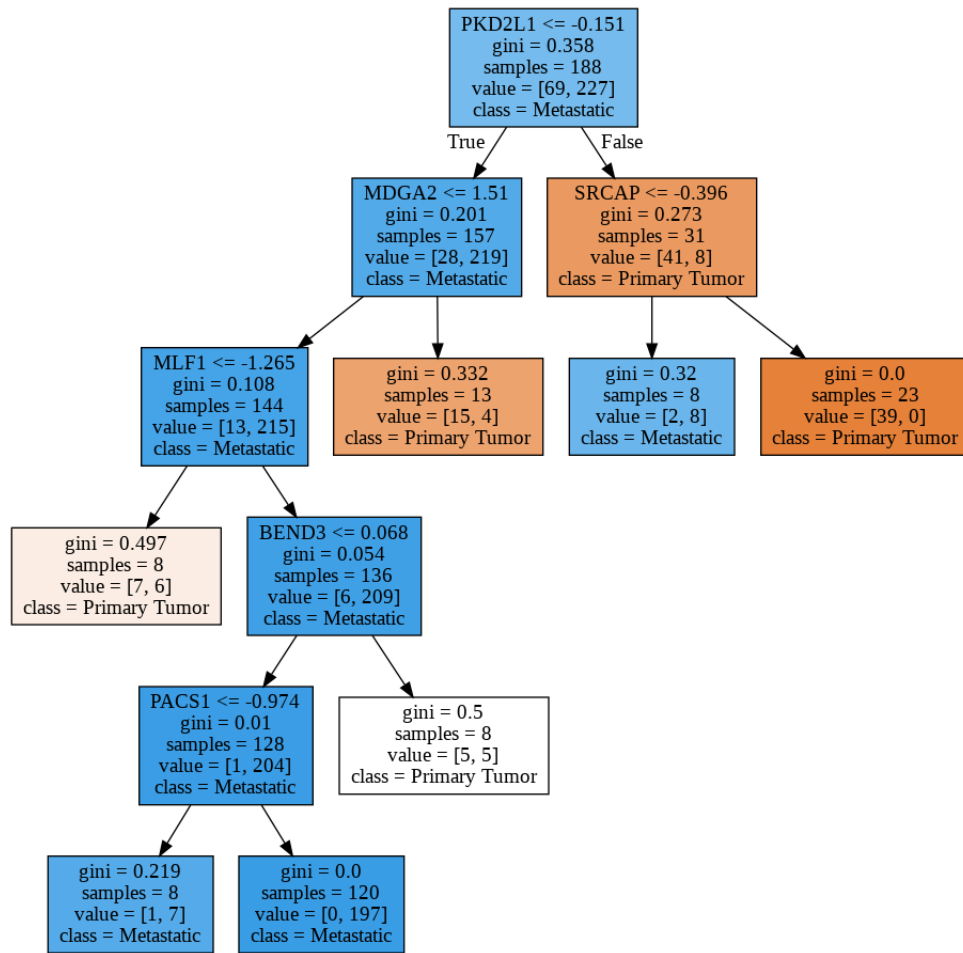


Figure S 32. Biomarker Discovery - Random Forest Estimator 28

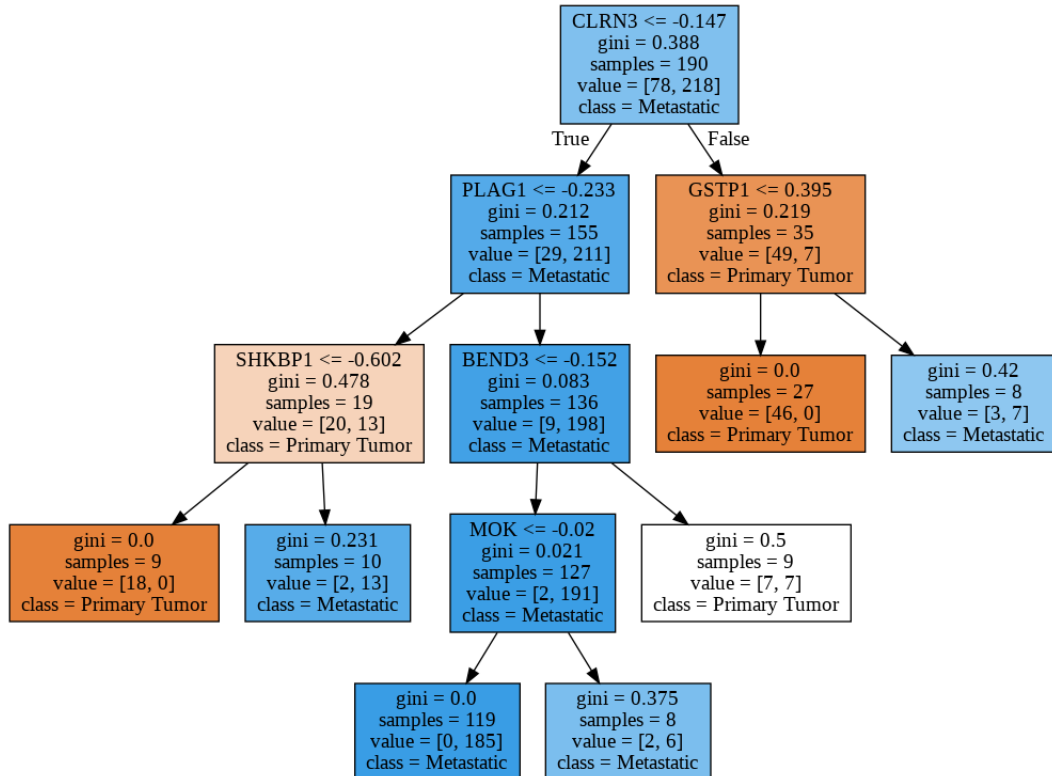


Figure S 33. Biomarker Discovery - Random Forest Estimator 29

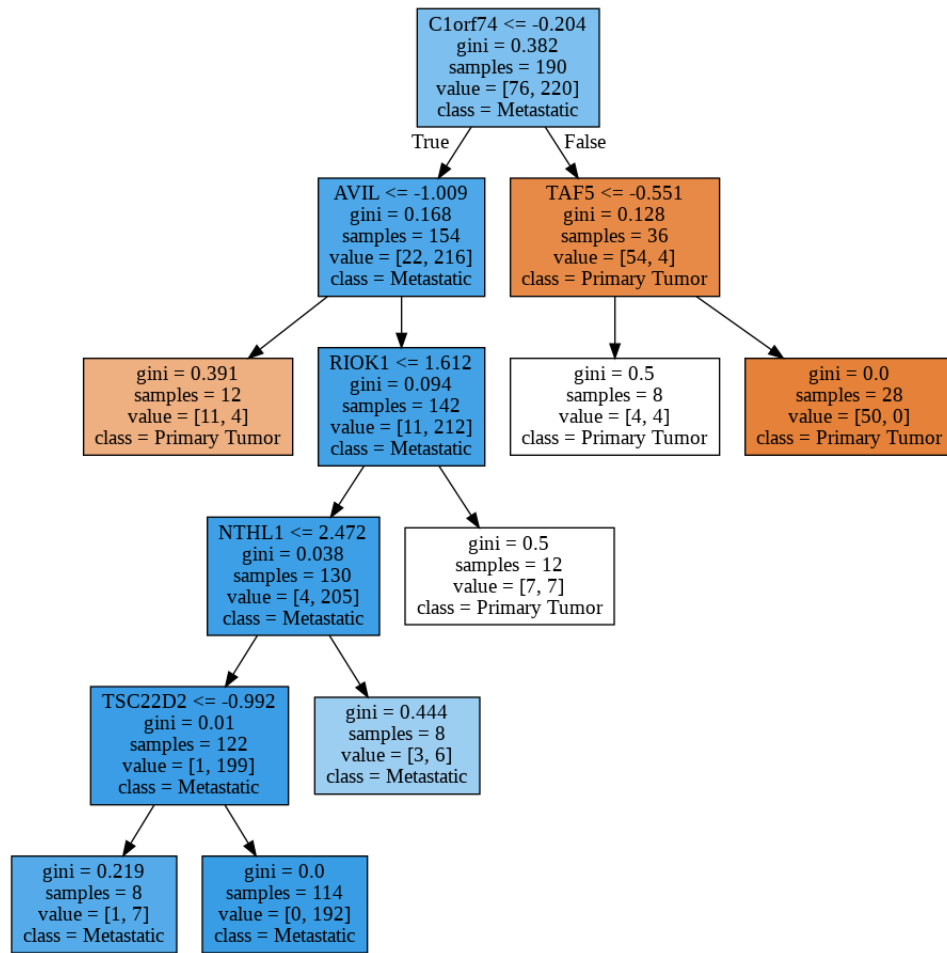


Figure S 34. Biomarker Discovery - Random Forest Estimator 30

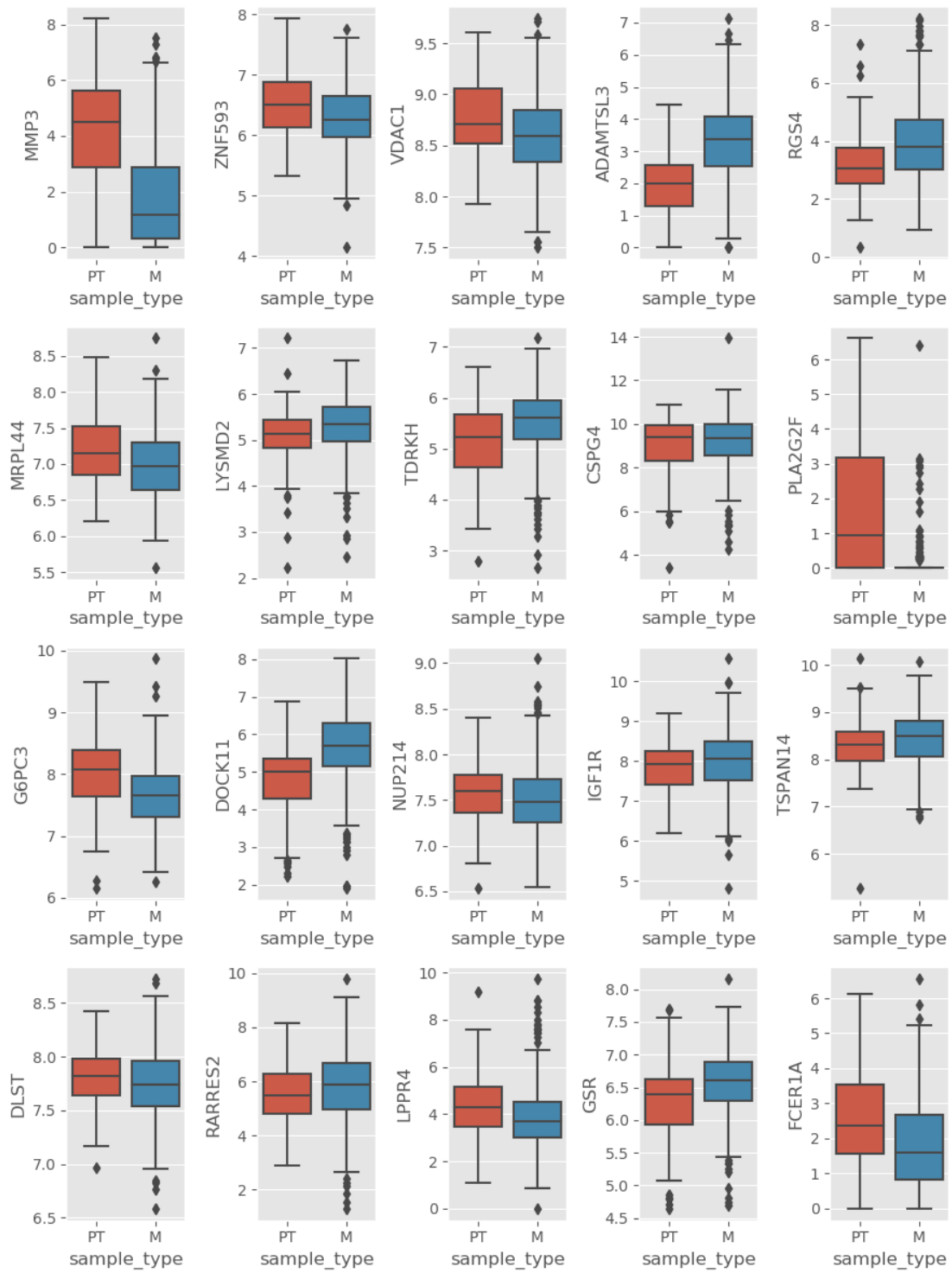


Figure S 35. Box Plots of Top 21 - 40 Gene Expressions.

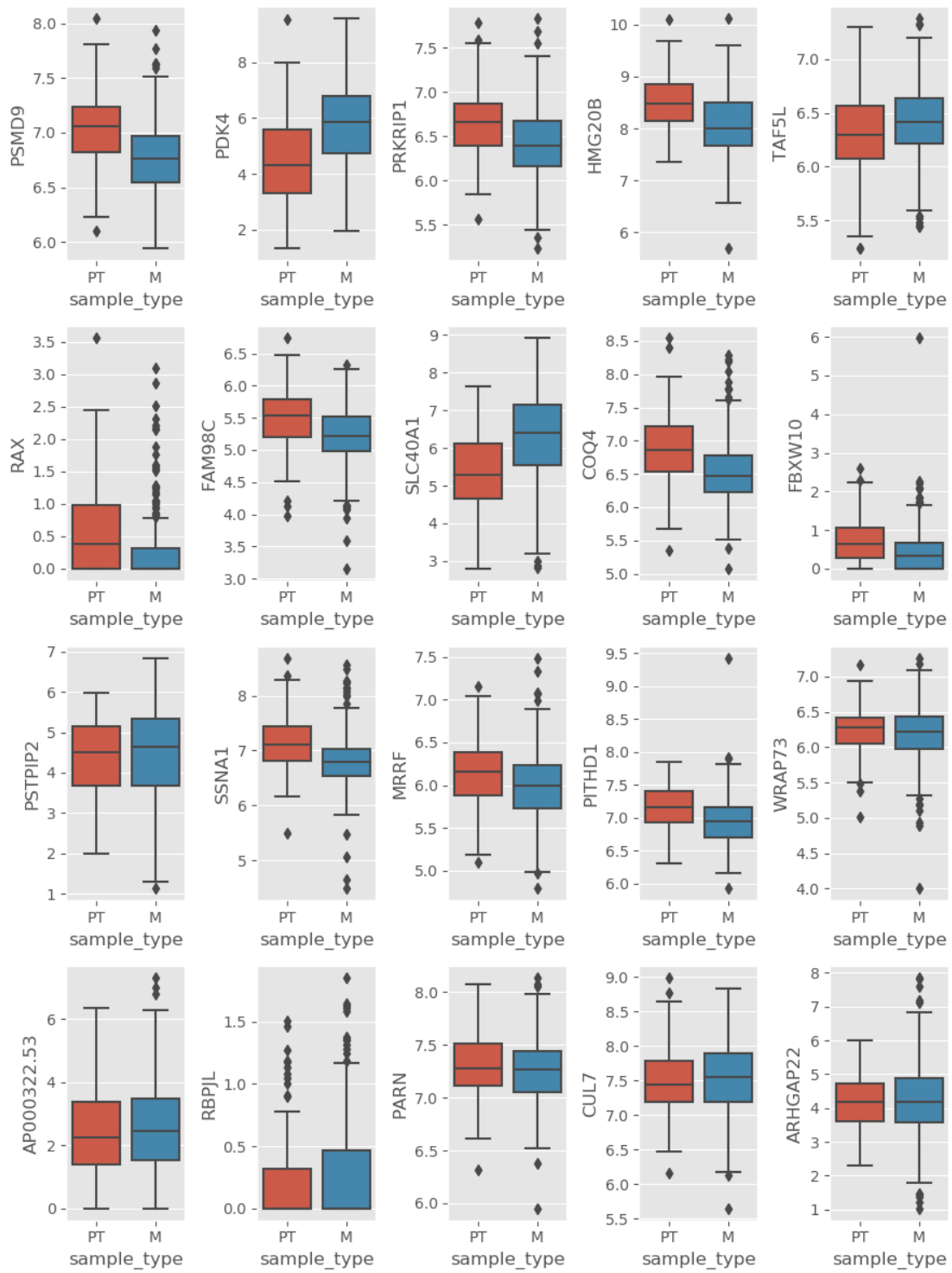


Figure S 36. Box Plots of Top 41 - 60 Gene Expressions.

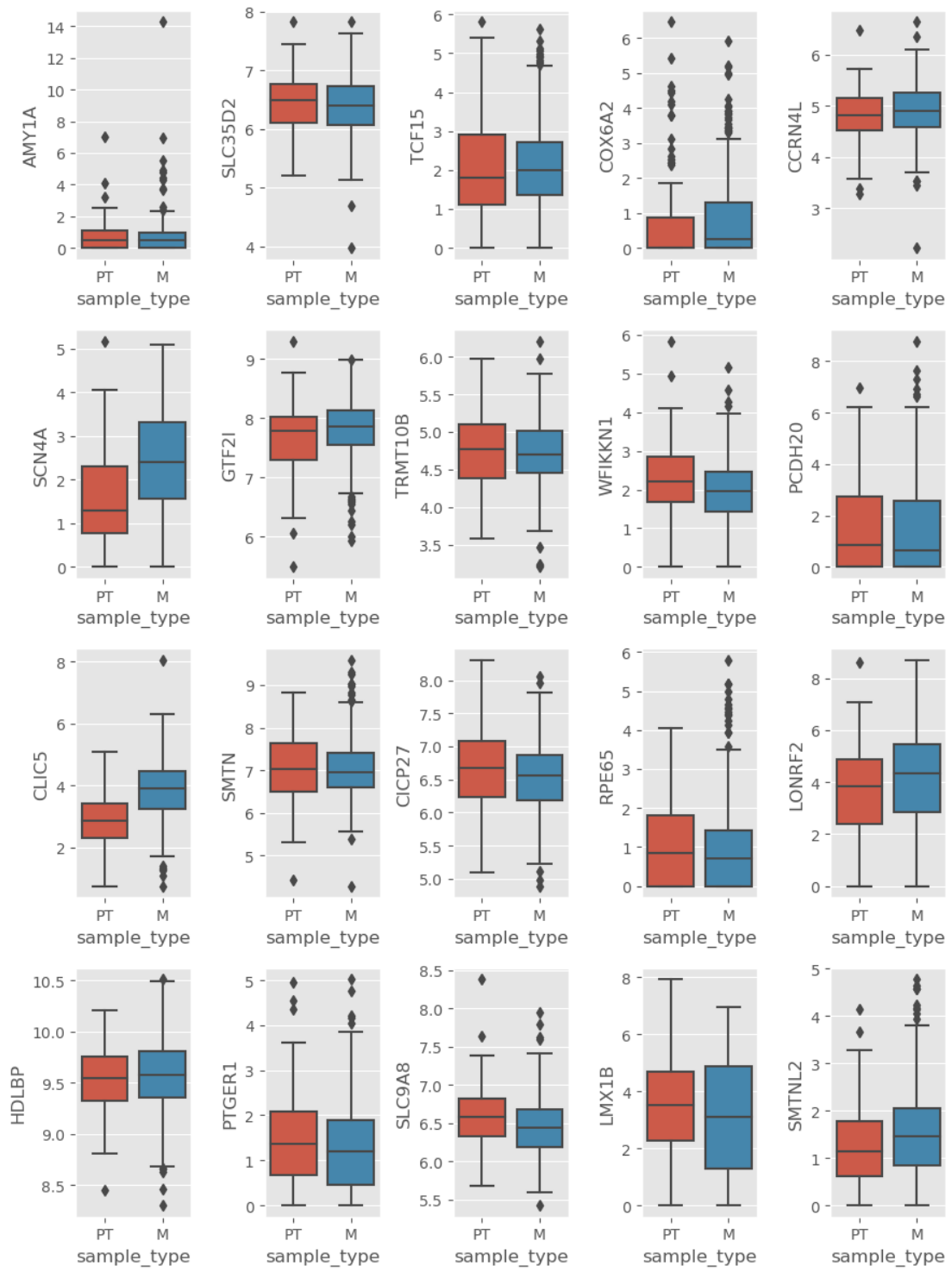


Figure S 37. Box Plots of Top 61 - 80 Gene Expressions.

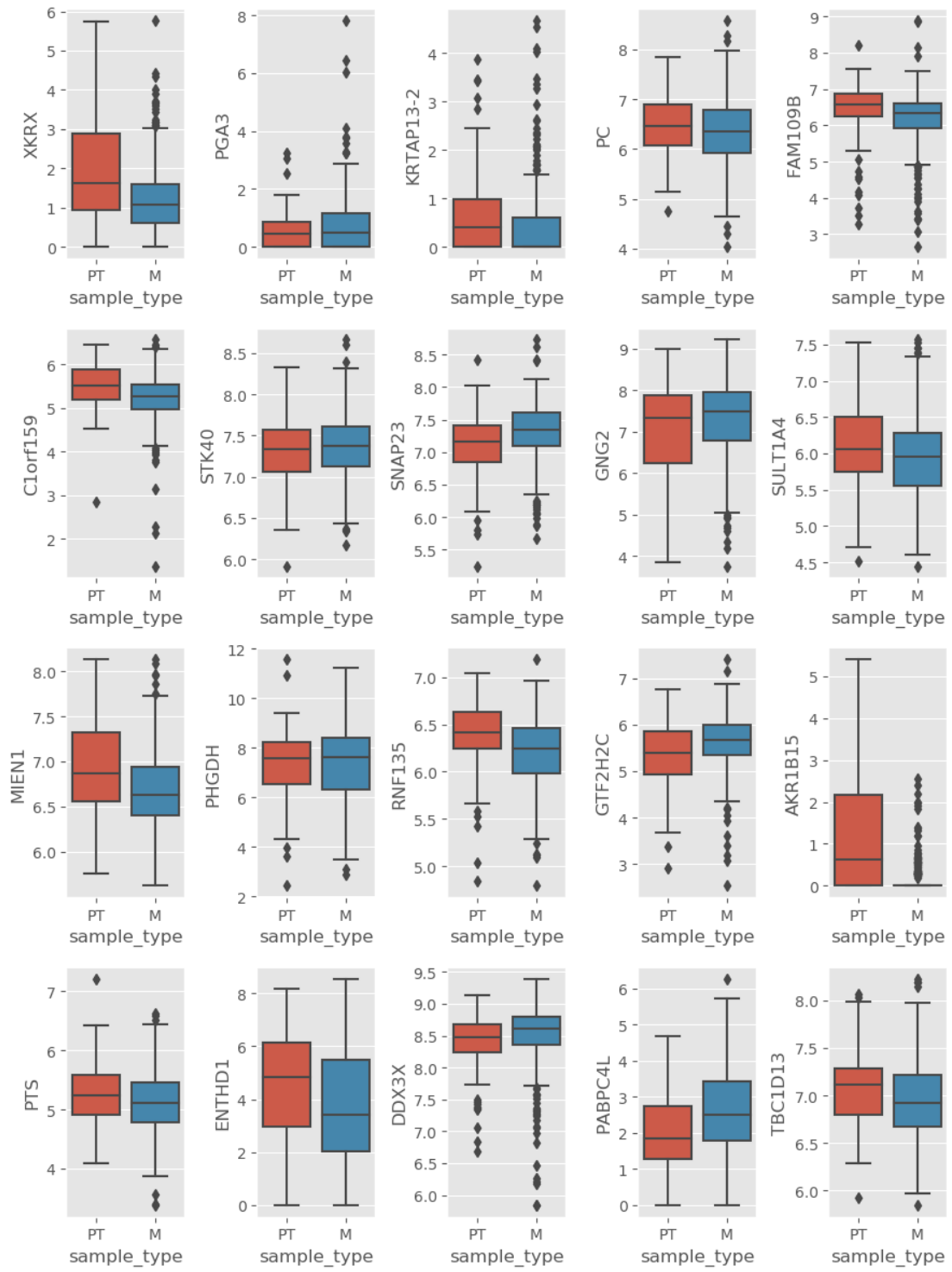


Figure S 38. Box Plots of Top 81 - 100 Gene Expressions.

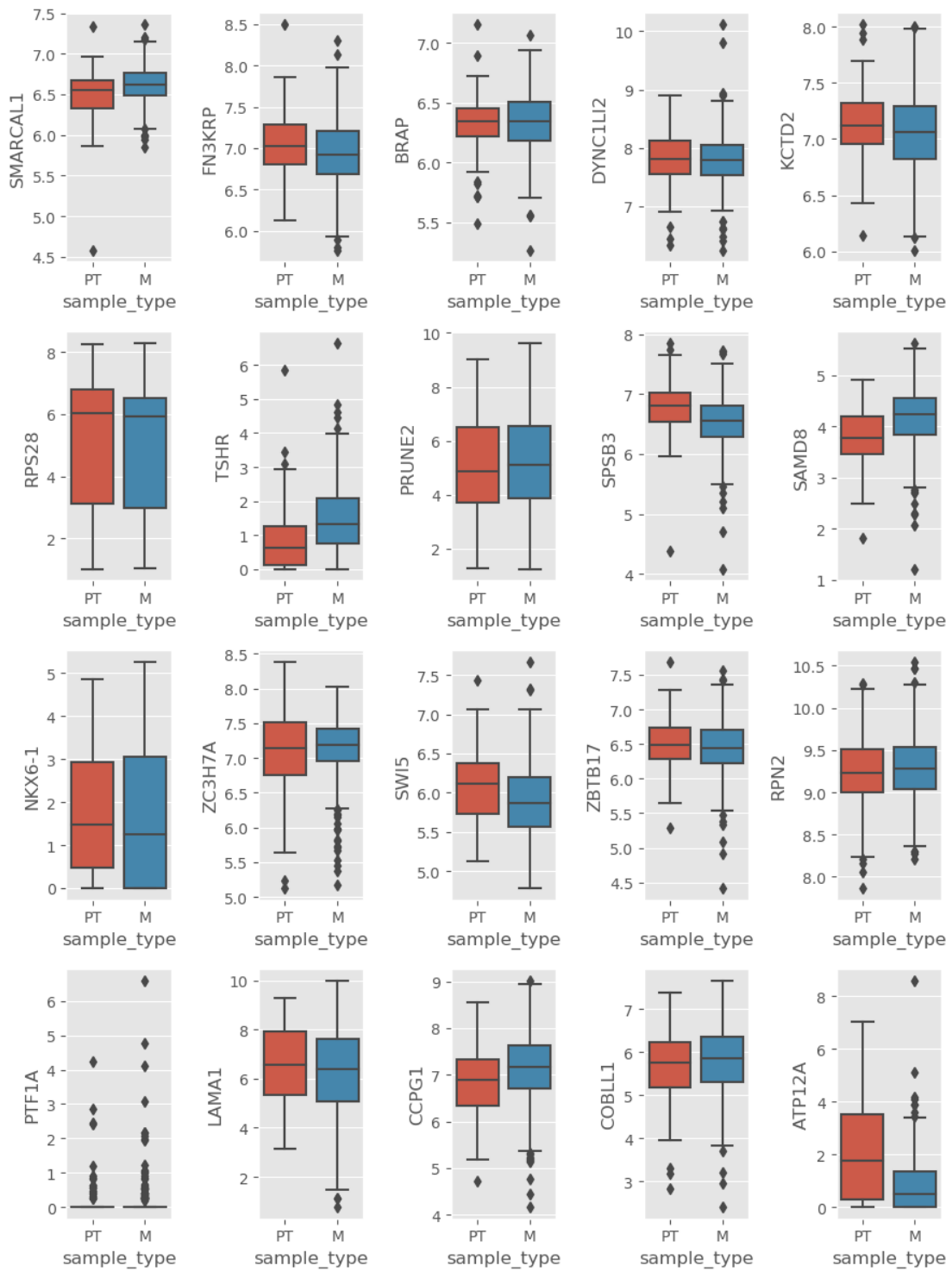


Figure S 39. Box Plots of Top 81 - 100 Gene Expressions.

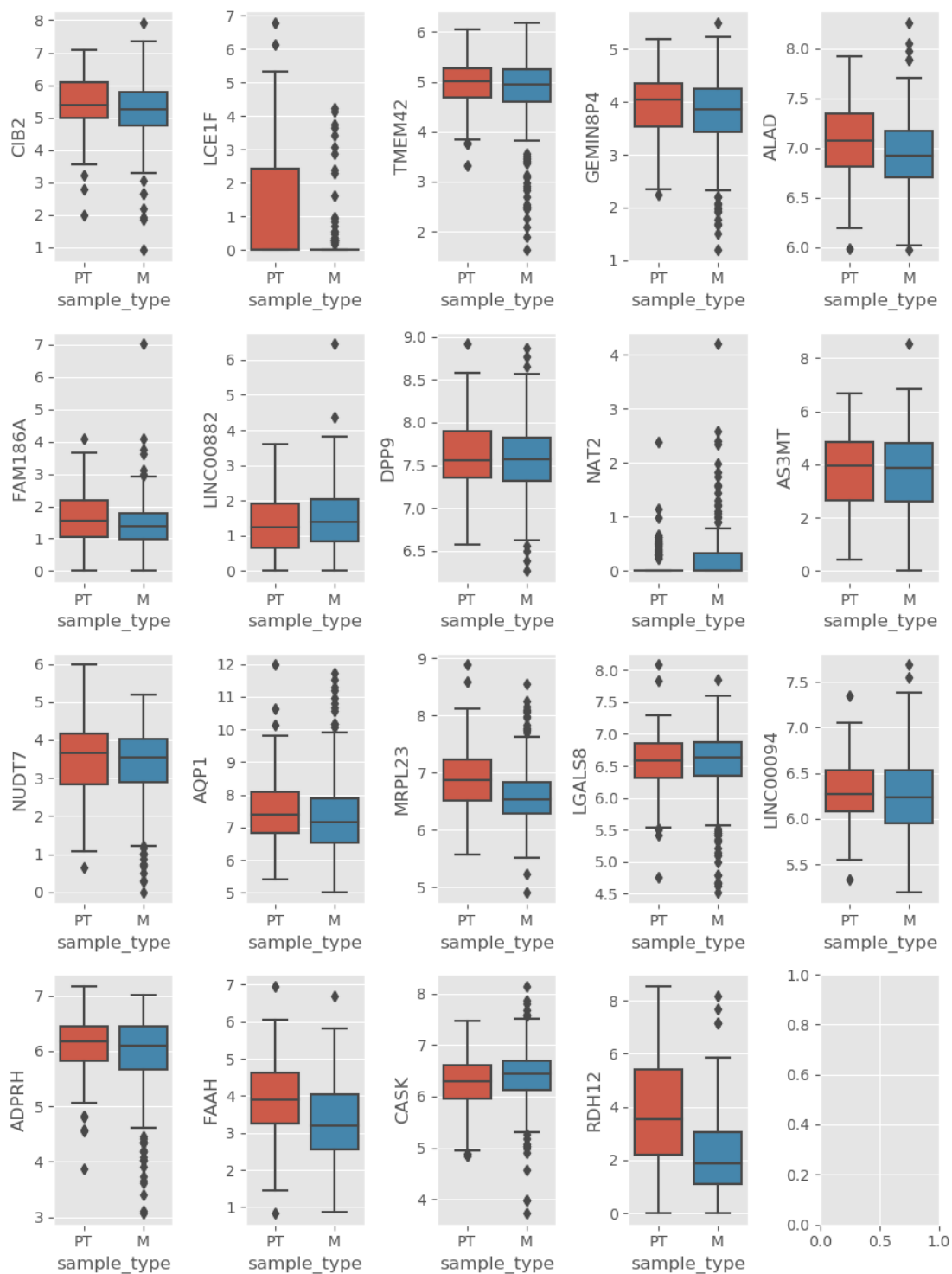


Figure S 40. Box Plots of Top 121 - 139 Gene Expressions.

Model	Average Expected Loss	Average Bias	Average Variance
RF-RF	0.0687	0.0569	0.0319
RF-LR	0.0933	0.0894	0.0311
RF-SVM-Sig	0.1202	0.1300	0.0275
RF-PPI-NB	0.1241	0.1219	0.0257
RF-NB	0.1378	0.1220	0.0704
RF-SVM-L	0.1407	0.1382	0.0069
RF-SVM-RB	0.1419	0.1382	0.0290
RF-PPI-LR	0.1423	0.1463	0.0149
RF-PPI-SVM-L	0.1463	0.1463	0.0295
RF-PPI-SVM-Sig	0.1951	0.2033	0.0100

Table S 1. Bias Variance Decomposition of the models

Model Name	F1	Accuracy	AUC
Ensemble Model with Soft Voting	90.60	91.05	0.9861

Table S 2. Model Performance (Validation Dataset) of Ensemble Model with Soft Voting